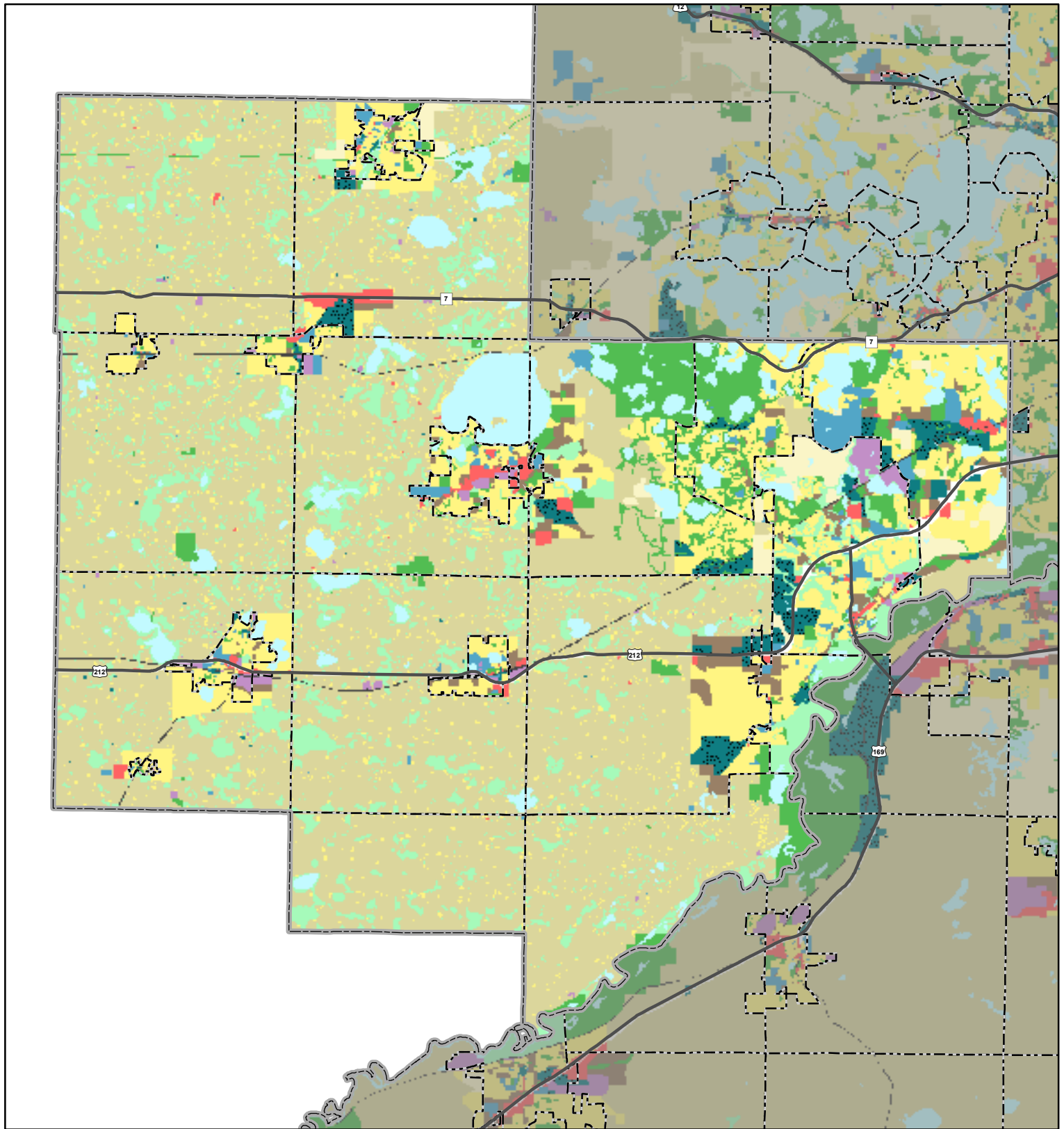


# Planned Land Use: Generalized Regional Categories Carver County



- |                            |                              |
|----------------------------|------------------------------|
| Agricultural               | Institutional                |
| Rural Residential          | Park and Recreation          |
| Single Family Residential  | Open Space or Restricted Use |
| Multi-Family Residential   | Open Water                   |
| Commercial                 | Major Vehicular Right-of-Way |
| Industrial                 | Railway Corridor             |
| Mixed Use                  | Airport                      |
| Multi-Optional Development | Vacant or No Data            |

- |                    |
|--------------------|
| Interstate Highway |
| Major Highway      |
| Community Boundary |

1 inch = 3.3693 miles



NOTE: This map is not a legal document. This information is based on the communities' 2040 comprehensive plan. For those communities where a 2040 comprehensive plan has not been adopted, data reflects their 2030 Comprehensive Plan. For exact planned land use information, please contact the community.



March 2019