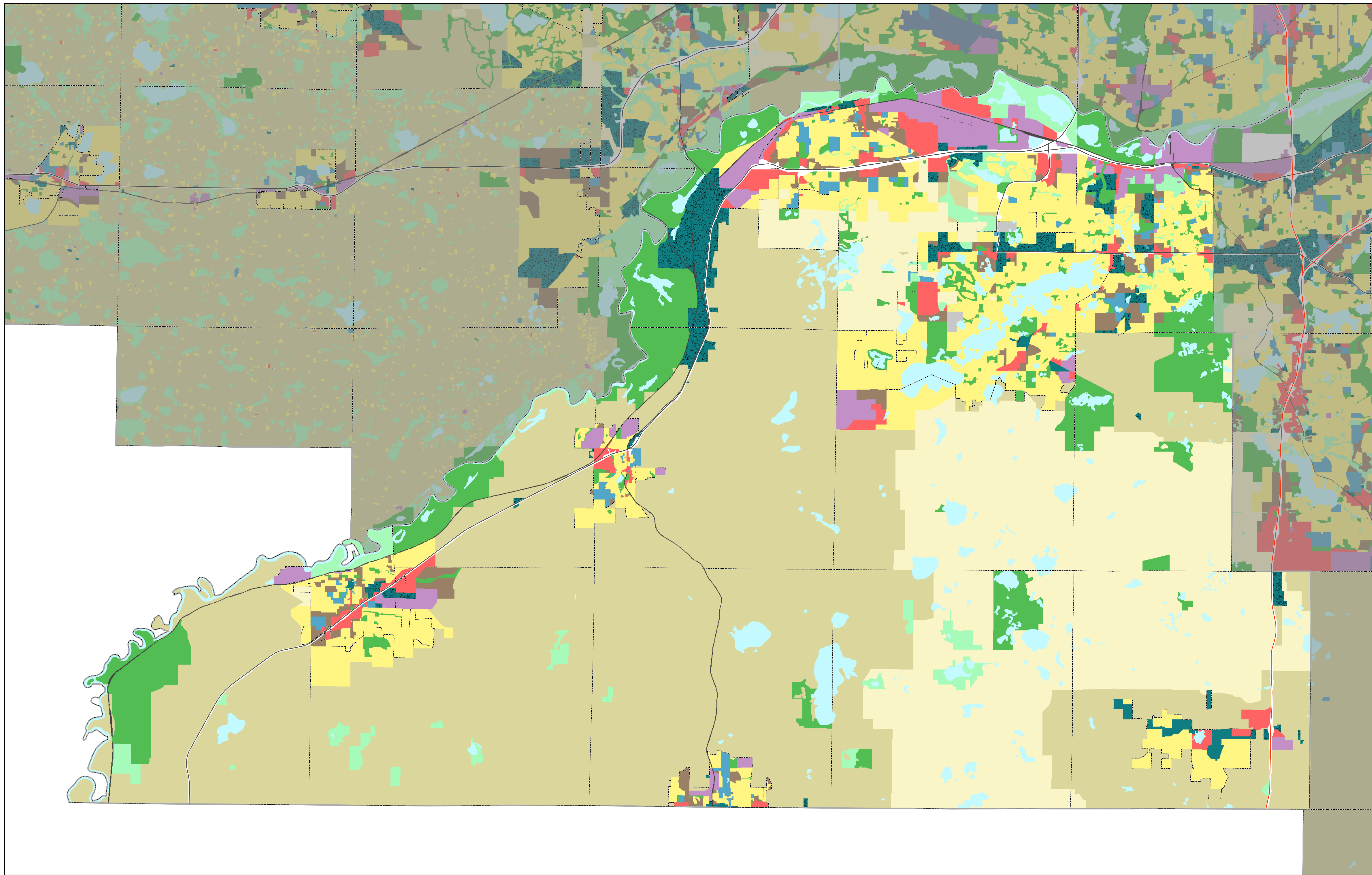


# Planned Land Use: Generalized Regional Categories

## Scott County



- |   |  |  |  |   |
|---|--|--|--|---|
| <span style="display: inline-block; width: 10px; height: 10px; background-color: #d4c08d; border: 1px solid black;"></span> Agricultural              | <span style="display: inline-block; width: 10px; height: 10px; background-color: #ff0000; border: 1px solid black;"></span> Commercial                 | <span style="display: inline-block; width: 10px; height: 10px; background-color: #4682b4; border: 1px solid black;"></span> Institutional                | <span style="display: inline-block; width: 10px; height: 10px; background-color: #ffffff; border: 1px solid black;"></span> Major Vehicular Right-of-Way | <span style="display: inline-block; width: 10px; height: 10px; background-color: #000000; border: 1px solid black;"></span> Major Highway |
| <span style="display: inline-block; width: 10px; height: 10px; background-color: #f5deb3; border: 1px solid black;"></span> Rural Residential         | <span style="display: inline-block; width: 10px; height: 10px; background-color: #800080; border: 1px solid black;"></span> Industrial                 | <span style="display: inline-block; width: 10px; height: 10px; background-color: #008000; border: 1px solid black;"></span> Park and Recreation          | <span style="display: inline-block; width: 10px; height: 10px; background-color: #333333; border: 1px solid black;"></span> Railway Corridor             | <span style="display: inline-block; width: 10px; height: 10px; background-color: #ff0000; border: 1px solid black;"></span> Interstate    |
| <span style="display: inline-block; width: 10px; height: 10px; background-color: #ffd700; border: 1px solid black;"></span> Single Family Residential | <span style="display: inline-block; width: 10px; height: 10px; background-color: #008080; border: 1px solid black;"></span> Mixed Use                  | <span style="display: inline-block; width: 10px; height: 10px; background-color: #90ee90; border: 1px solid black;"></span> Open Space or Restricted Use | <span style="display: inline-block; width: 10px; height: 10px; background-color: #4682b4; border: 1px solid black;"></span> Airport                      | <span style="display: inline-block; width: 10px; height: 10px; border-top: 1px dashed black;"></span> Community Boundary                  |
| <span style="display: inline-block; width: 10px; height: 10px; background-color: #8b4513; border: 1px solid black;"></span> Multi-Family Residential  | <span style="display: inline-block; width: 10px; height: 10px; background-color: #006400; border: 1px solid black;"></span> Multi-Optional Development | <span style="display: inline-block; width: 10px; height: 10px; background-color: #add8e6; border: 1px solid black;"></span> Open Water                   | <span style="display: inline-block; width: 10px; height: 10px; background-color: #a9a9a9; border: 1px solid black;"></span> Vacant or No Data            | <span style="display: inline-block; width: 10px; height: 10px; border-top: 1px solid black;"></span> County Boundary                      |

NOTE: This map is not a legal document. The Metropolitan Council has compiled the planned land use depictions for most communities\* in the seven-county Twin Cities metropolitan area into one GIS dataset. Each community\* (city or township) in the metropolitan area was required to complete a 2040 comprehensive plan by 2018 for review by the Council to assure all community plans are compatible with regional systems (i.e., sewer, transportation, etc.). Communities are now required to submit a 2030 plan for their community for review by 2008. For those communities where a 2040 comprehensive plan has not been adopted, data reflects their 2030 Comprehensive Plan. Through comprehensive plan amendments, some community's land use designation may change over time. For exact planned land use information, please contact the community.

\*Hannover, New Prague, Northfield and Rockford are outside the Metropolitan Council's Comprehensive Plan review jurisdiction and therefore do not have to submit comprehensive plans nor plan amendments to the Council.

1 inch = 0.764 miles