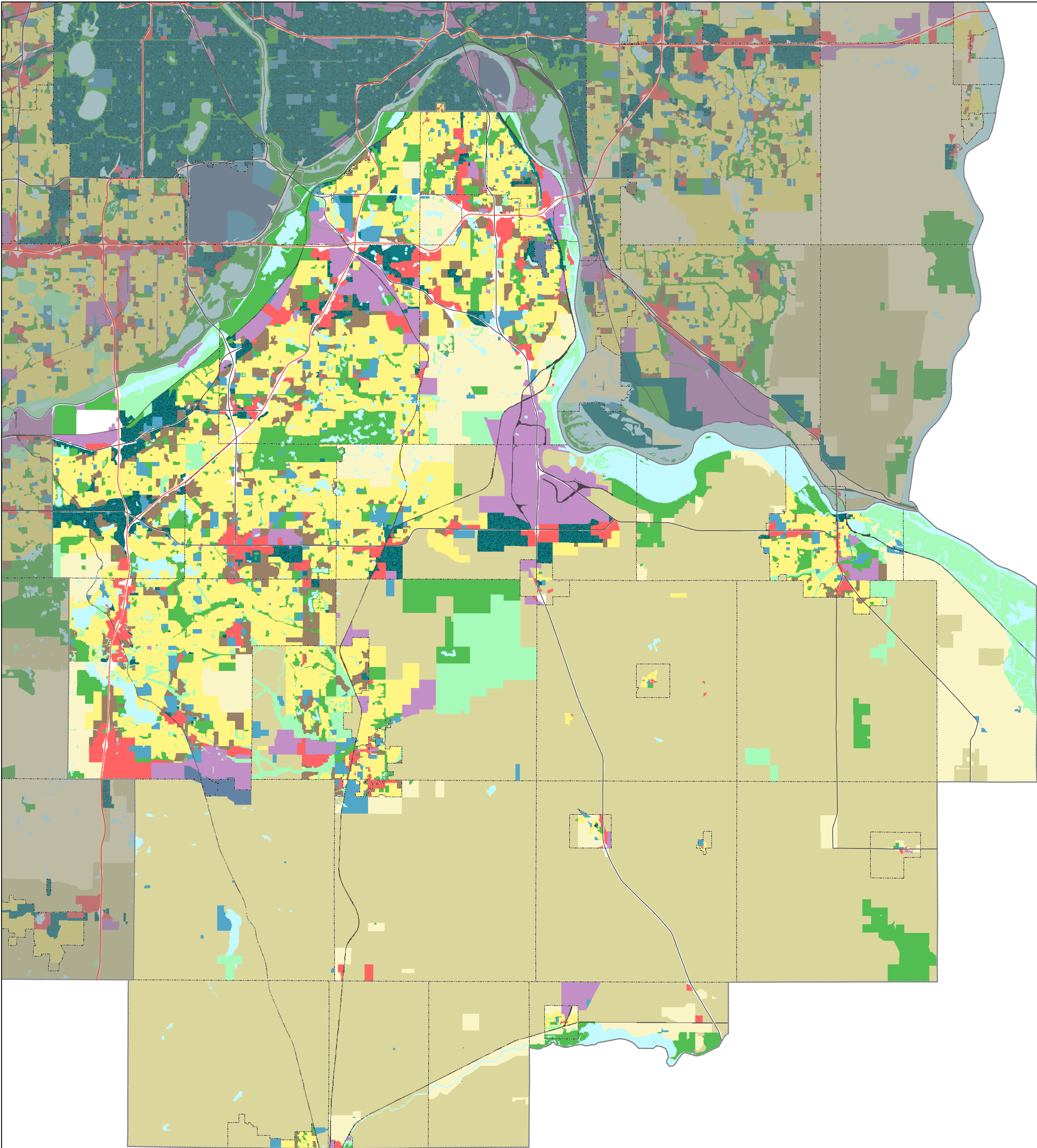


Planned Land Use: Generalized Regional Categories

Dakota County



- | | | | |
|---------------------------|------------------------------|------------------------------|--------------------|
| Agricultural | Mixed Use | Major Vehicular Right-of-Way | Major Highway |
| Rural Residential | Multi-Optional Development | Railway Corridor | Interstate |
| Single Family Residential | Institutional | Airport | Community Boundary |
| Multi-Family Residential | Park and Recreation | Vacant or No Data | County Boundary |
| Commercial | Open Space or Restricted Use | | |
| Industrial | Open Water | | |

NOTE: This map is not a legal document. The Metropolitan Council has compiled the planned land use depictions for most communities* in the seven-county Twin Cities metropolitan area into one GIS dataset. Each community* (city or township) in the metropolitan area was required to complete a 2040 comprehensive plan by 2018 for review by the Council to assure all community plans are compatible with regional systems (i.e., sewer, transportation, etc.). Communities are now required to submit a 2030 plan for their community for review by 2028. For those communities where a 2040 comprehensive plan has not been adopted, data reflects their 2030 Comprehensive Plan, Through comprehensive plan amendments, some community's land use designation may change over time. For exact planned land use information, please contact the community.

*Hannover, New Prague, Northfield and Rockford are outside the Metropolitan Council's Comprehensive Plan review jurisdiction and therefore do not have to submit comprehensive plans nor plan amendments to the Council.

1 inch = 0.9784 miles



March 2019