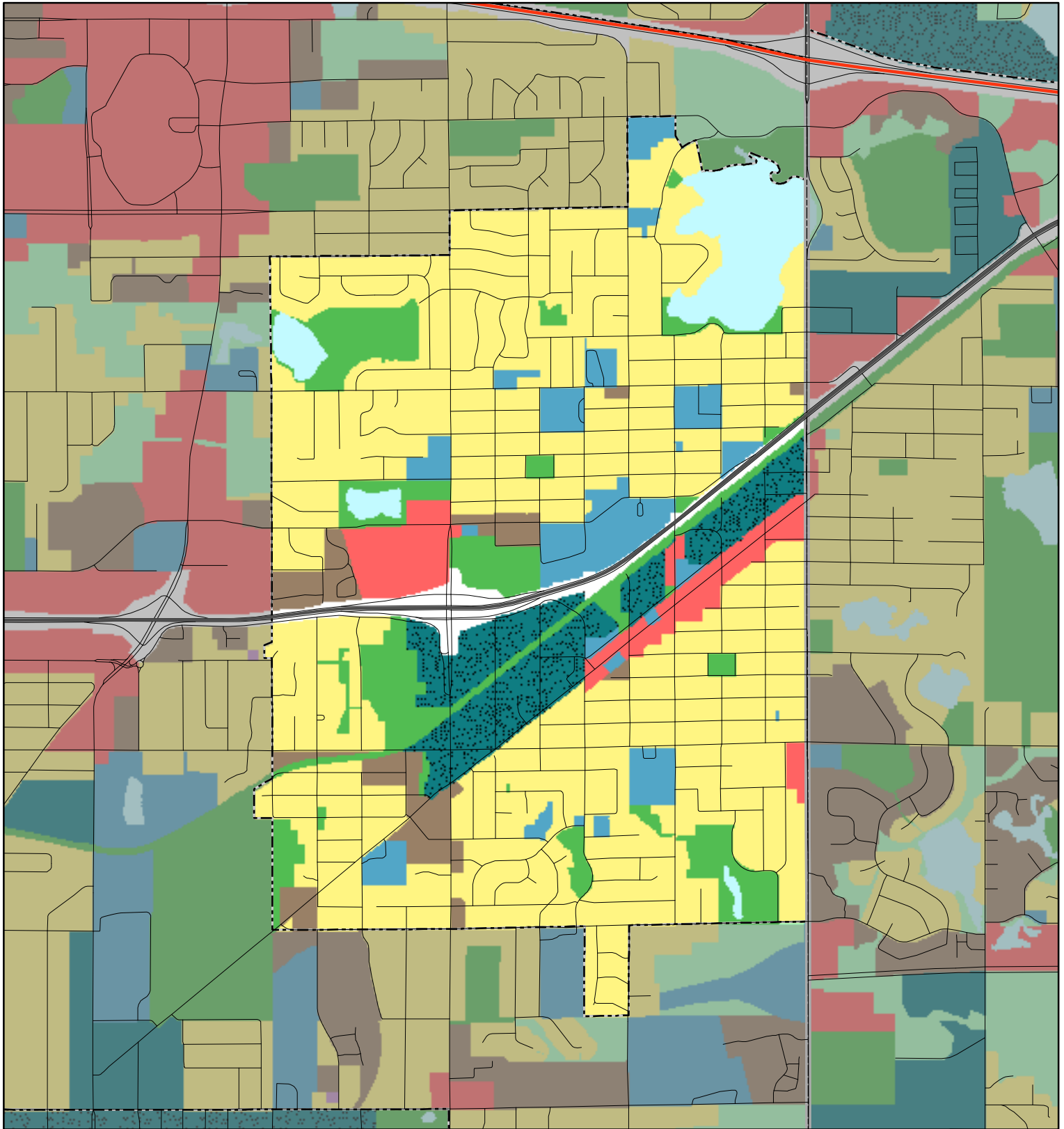


Planned Land Use: Generalized Regional Categories North St. Paul



- | | |
|----------------------------|------------------------------|
| Agricultural | Institutional |
| Rural Residential | Park and Recreation |
| Single Family Residential | Open Space or Restricted Use |
| Multi-Family Residential | Open Water |
| Commercial | Major Vehicular Right-of-Way |
| Industrial | Railway Corridor |
| Mixed Use | Airport |
| Multi-Optional Development | Vacant or No Data |

- | |
|--------------------|
| Interstate Highway |
| Major Highway |
| Local Roads |
| Community Boundary |

1 inch = 0.3707 miles



NOTE: This map is not a legal document. This information is based on the communities' 2040 comprehensive plan. For those communities where a 2040 comprehensive plan has not been adopted, data reflects their 2030 Comprehensive Plan. For exact planned land use information, please contact the community.



March 2019