

Twin Cities Metropolitan Area
2040 Regional Park System Plan

Regional Trails

- Existing (Open to Public)
- Existing (Not Open to Public)
- Planned

Regional Parks

- Existing (Open to Public)
- In Master Plan (Not Open to Public)
- Planned Units

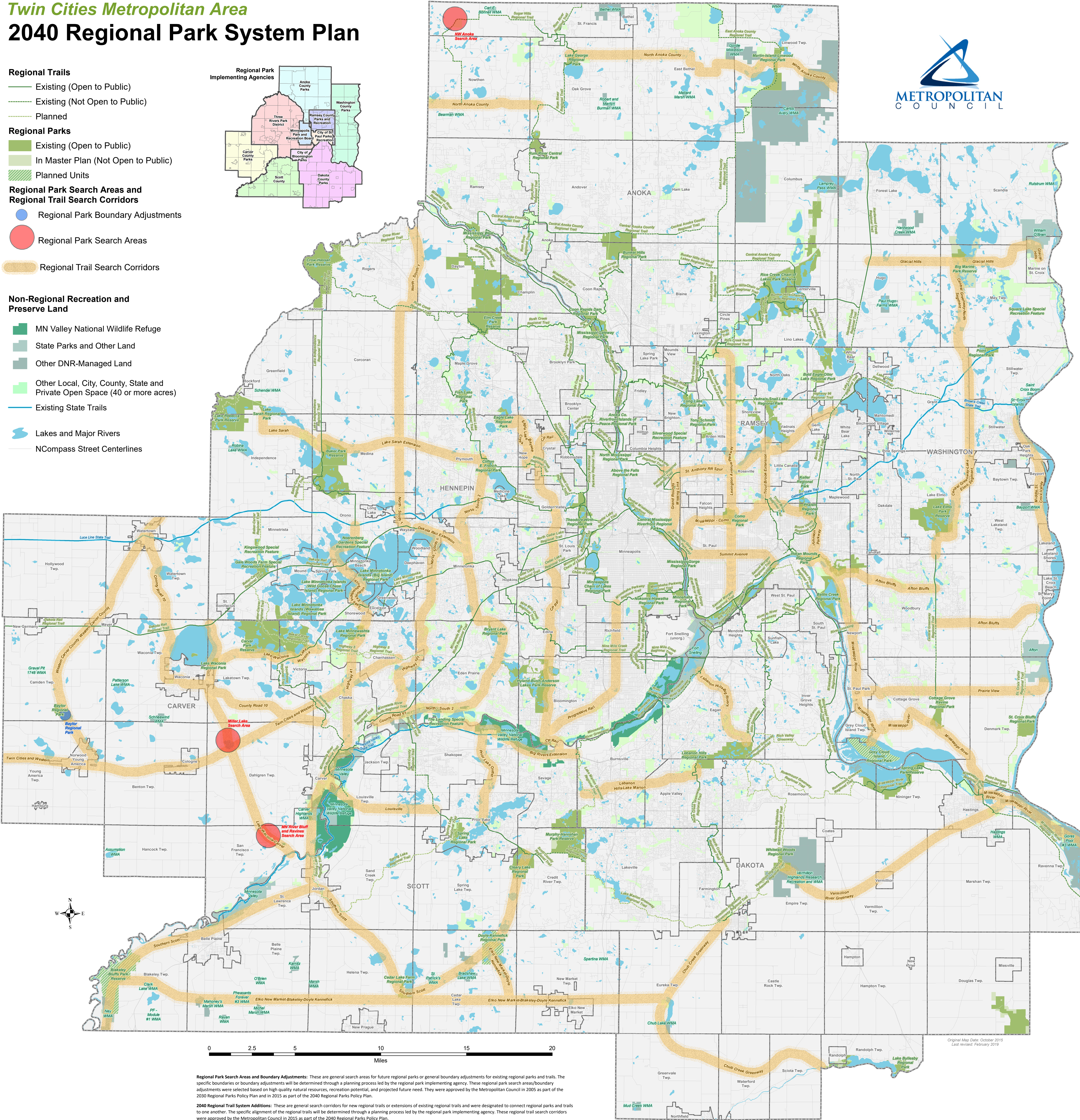
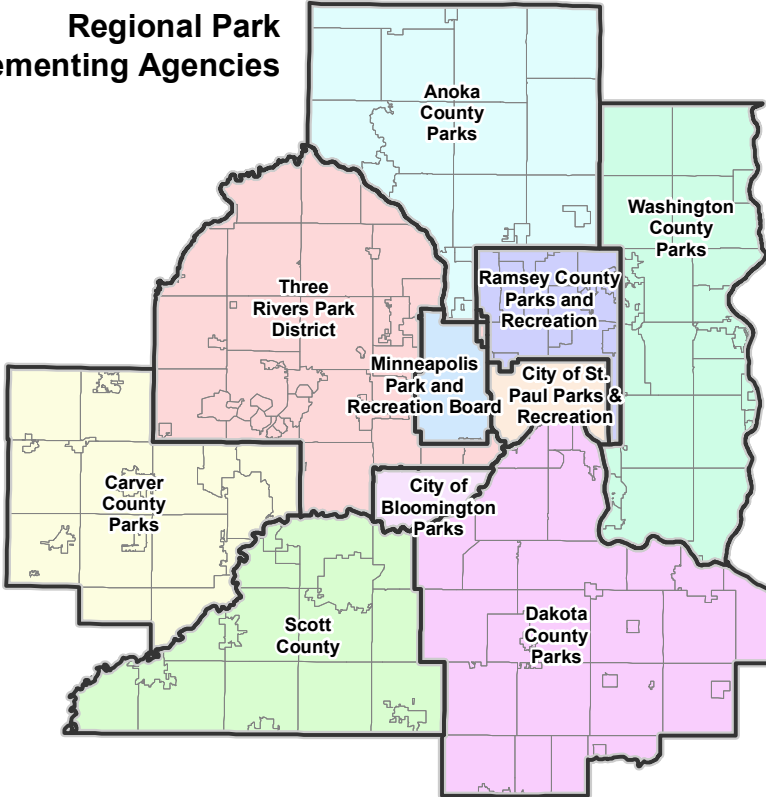
Regional Park Search Areas and
Regional Trail Search Corridors

- Regional Park Boundary Adjustments
- Regional Park Search Areas
- Regional Trail Search Corridors

Non-Regional Recreation and
Preserve Land

- MN Valley National Wildlife Refuge
- State Parks and Other Land
- Other DNR-Managed Land
- Other Local, City, County, State and Private Open Space (40 or more acres)
- Existing State Trails
- Lakes and Major Rivers
- NCompass Street Centerlines

Regional Park
Implementing Agencies



Regional Park Search Areas and Boundary Adjustments: These are general search areas for future regional parks or general boundary adjustments for existing regional parks and trails. The specific boundaries or boundary adjustments will be determined through a planning process led by the regional park implementing agency. These regional park search areas/boundary adjustments were selected based on high quality natural resources, recreation potential, and projected future need. They were approved by the Metropolitan Council in 2005 as part of the 2030 Regional Parks Policy Plan and in 2015 as part of the 2040 Regional Parks Policy Plan.

2040 Regional Trail System Additions: These are general search corridors for new regional trails or extensions of existing regional trails and were designated to connect regional parks and trails to one another. The specific alignment of the regional trails will be determined through a planning process led by the regional park implementing agency. These regional trail search corridors were approved by the Metropolitan Council in 2015 as part of the 2040 Regional Parks Policy Plan.

Regional Trail Search Corridors: These are general search corridors for new regional trails and were designated to connect regional parks and trails to one another. The specific alignment of the regional trails will be determined through a planning process led by the regional park implementing agency. "Proposed" trails from past datasets are also now classified as regional trail search corridors. These regional trail search corridors were approved by the Metropolitan Council as part of various Regional Parks Policy Plans over the years and also affirmed in 2015 as part of the 2040 Regional Parks Policy Plan.

Original Map Date: October 2015
Last revised: February 2019