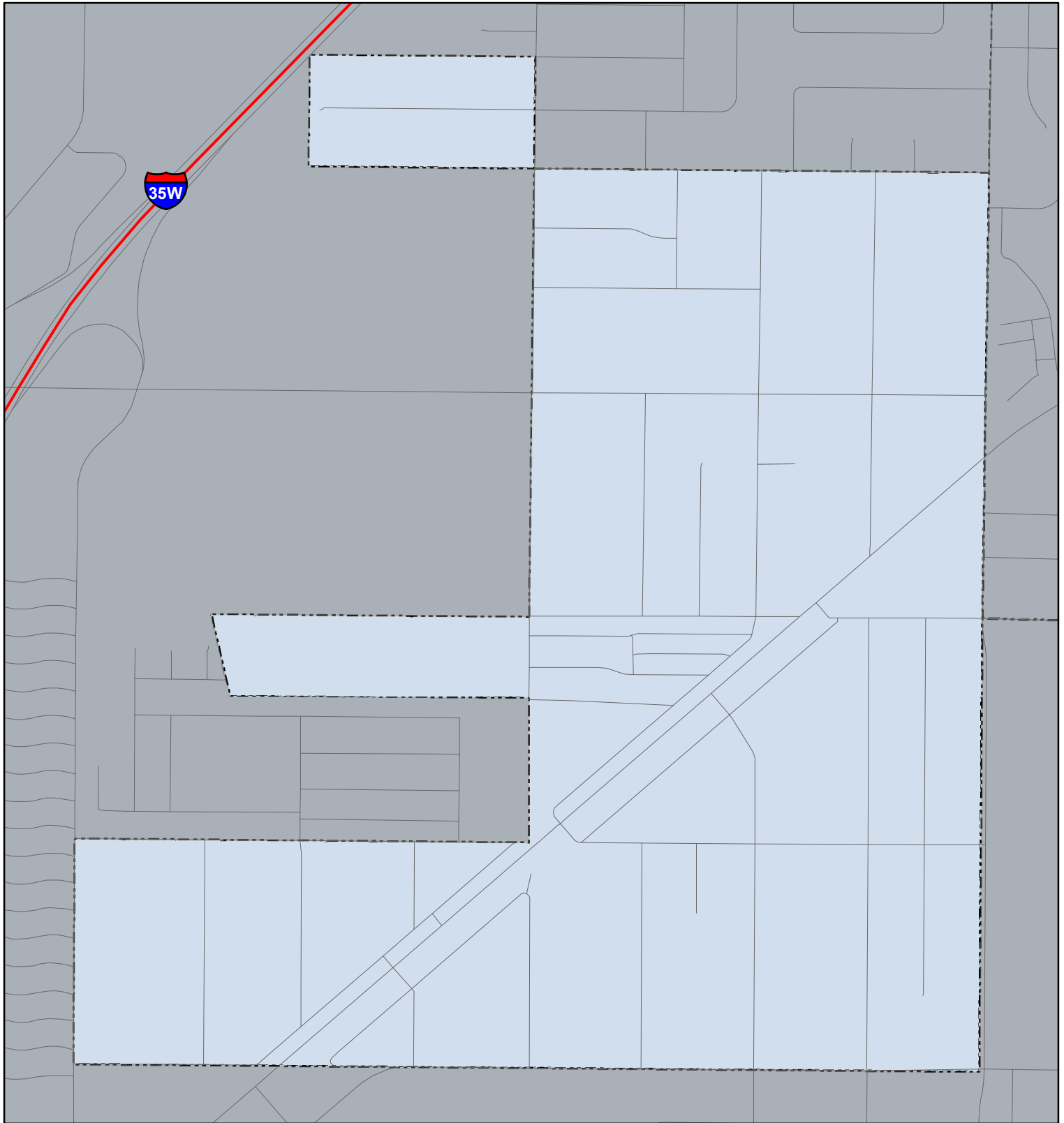


# 2020, 2030 and 2040 Metropolitan Urban Service Area Lexington



## Metropolitan Sewer System

- 2020 MUSA
- 2030 MUSA
- 2040 MUSA
- Undesignated MUSA
- Undesignated MUSA Reserve

## Local Sewer System

- 2020 MUSA
- 2030 MUSA
- 2040 MUSA
- Private System
- SMSC\*\*

- No MUSA
- Interstate Highway
- Major Highway
- Local Road
- Community Boundary
- County Boundary

1 inch = 0.148674 miles

NOTE: This map is not a legal document. The Metropolitan Urban Service Areas (MUSA) shown are compiled from each community's 2040 and 2030 comprehensive plan and subsequent plan amendments. For those communities where a 2040 comprehensive plan has not been reviewed and incorporated into GIS, data reflects their 2030 comprehensive plan. Areas defined as "Undesignated MUSA" designate areas where an agreed upon acreage between the community and the Council will be added to the 2020 MUSA. For exact MUSA information, please contact the community.

\*\* Shakopee Mdewakanton Sioux Community (SMSC)



Sept. 2018