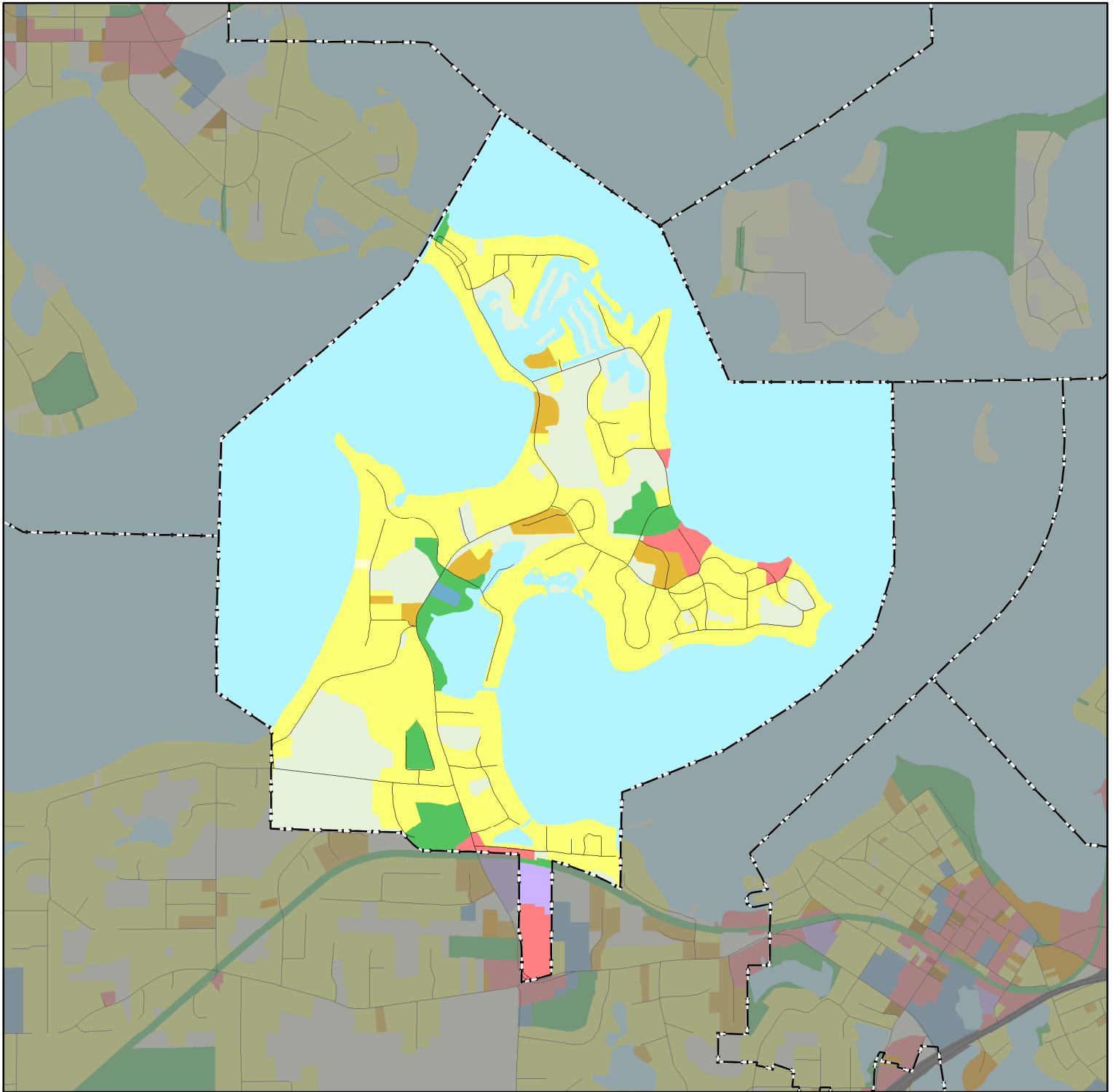


# Tonka Bay



Approximately 1 inch = 0.3493 miles

## 2016 Land Use Classes

|                                  |                                |                       |                               |                         |                       |
|----------------------------------|--------------------------------|-----------------------|-------------------------------|-------------------------|-----------------------|
| <b>Single Family Residential</b> | <b>Multifamily Residential</b> | <b>Mixed Use</b>      | <b>Industrial</b>             | <b>Agricultural</b>     | <b>Transportation</b> |
| Farmstead                        | Multifamily                    | Mixed-Use Residential | Industrial and Utility        | Agricultural Activities | Major Highway         |
| Seasonal / Vacation              | Manufactured Housing Park      | Mixed-Use Industrial  | Extractive                    |                         | Major Railway         |
| Single Family, Detached          | <b>Commercial</b>              | Mixed-Use Commercial  | <b>Park and Recreation</b>    | <b>Other</b>            | Airport or Airstrip   |
| Single Family, Attached          | Retail and Other Commercial    | <b>Institutional</b>  | Park, Recreation, or Preserve | Undeveloped             |                       |
|                                  | Office                         | Institutional         | Golf                          | Open Water              |                       |

**Land Use Data Sources:** 2016 State of Minnesota Aerial Imagery • 2010 Generalized Land Use Delineations • NCompass Technologies Road Centerline Data  
2016 Parcel Data from all Seven Metropolitan Counties • Internet Resources • Field Checks • Community Feedback

County Boundary    City and Township Boundaries    Roads    Railway  
--- April 2016    --- April 2016    --- NCompass, April 2016    --- MNDOT, 2001