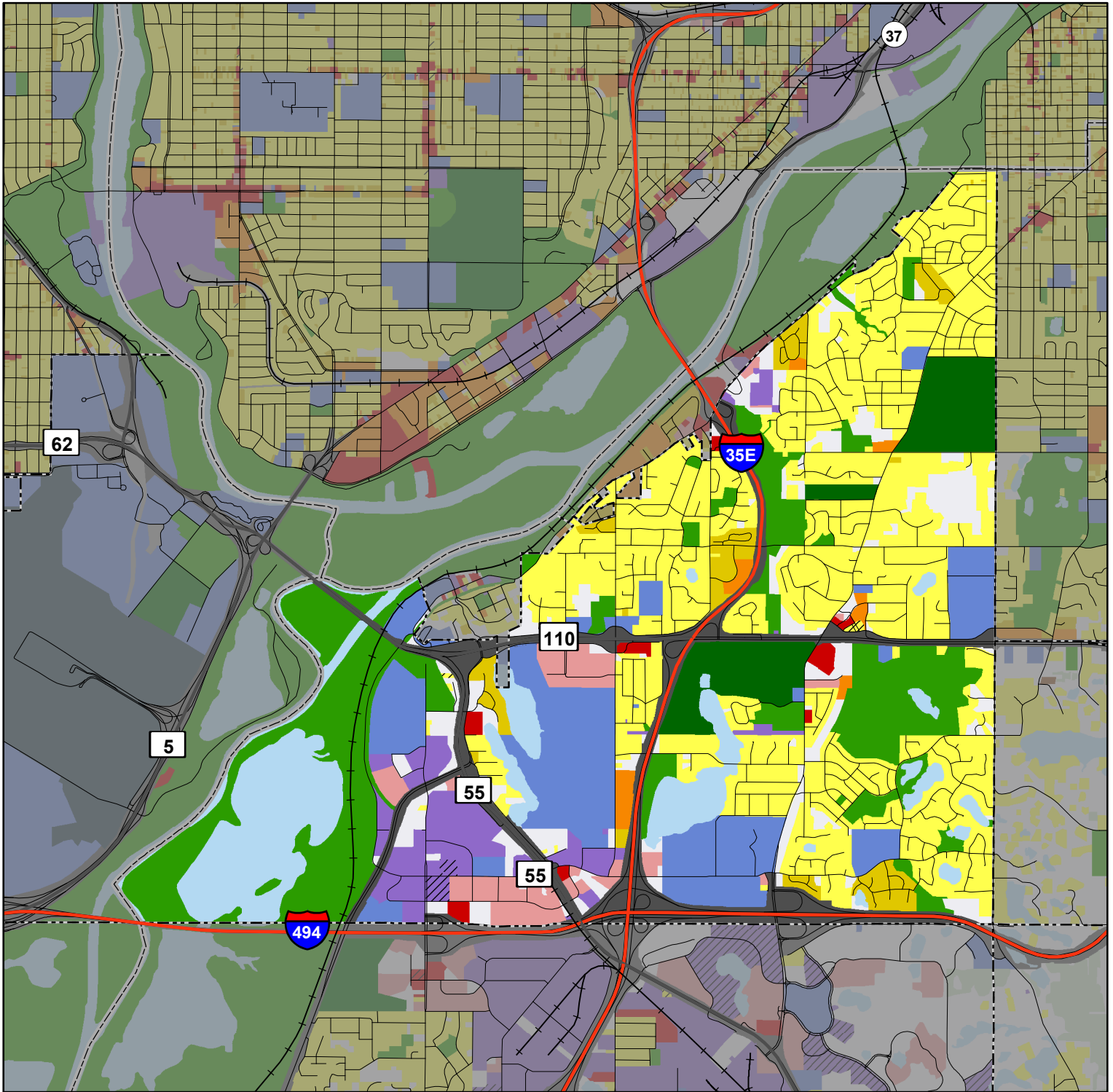


# Mendota Heights



Approximately 1 inch = 0.739 miles

## 2010 Land Use Classes

<b>Single Family Residential</b>	<b>Multifamily Residential</b>	<b>Mixed Use</b>	<b>Industrial</b>	<b>Agricultural</b>	<b>Transportation</b>
Farmstead	Multifamily	Mixed-Use Residential	Industrial and Utility	Agricultural Activities	Major Highway
Seasonal / Vacation	Manufactured Housing Park	Mixed-Use Industrial	Extractive		Major Railway
Single Family, Detached	<b>Commercial</b>	Mixed-Use Commercial	<b>Park and Recreation</b>	<b>Other</b>	Airport or Airstrip
Single Family, Attached	Retail and Other Commercial	<b>Institutional</b>	Park, Recreation, or Preserve	Undeveloped	
	Office	Institutional	Golf	Open Water	

**Land Use Data Sources:** 2010 State of Minnesota Aerial Imagery • 2005 Generalized Land Use Delineations • NCompass Technologies Road Centerline Data  
2010 Parcel Data from all Seven Metropolitan Counties • Internet Resources • Field Checks • Community Feedback

County Boundary    City and Township Boundaries    Roads    Railway  
--- July 2010    --- July 2010    --- NCompass, April 2010    --- MNDOT, 2001