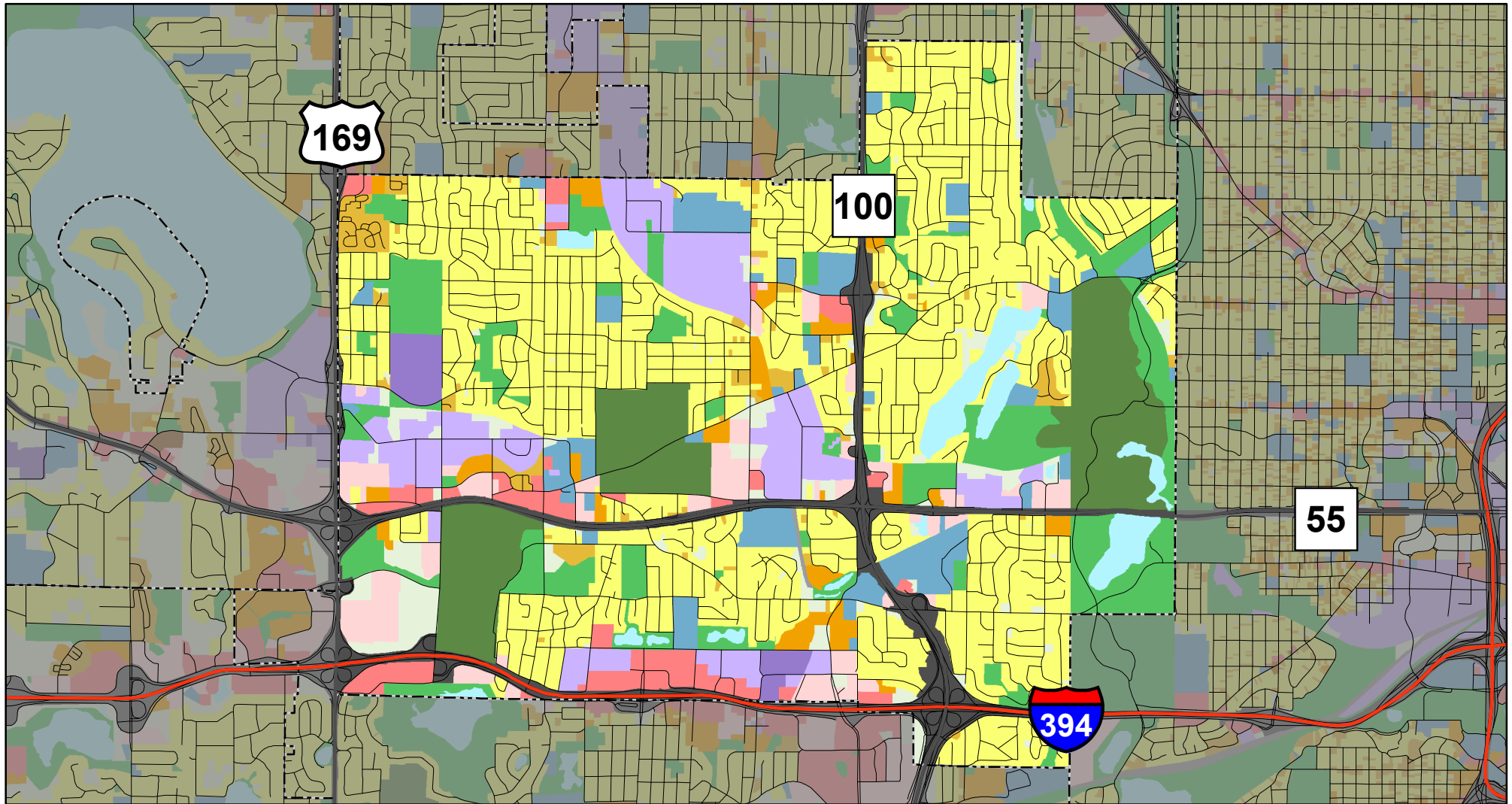


# 2010 Generalized Land Use Golden Valley



Approximately 1 inch = 0.6921 miles

## 2010 Land Use Classes

|  |  |  |  |   |  |
|--|--|--|--|---|--|
| <b>Single Family Residential</b><br>Farmstead<br>Seasonal / Vacation<br>Single Family, Detached<br>Single Family, Attached | <b>Multifamily Residential</b><br>Multifamily<br>Manufactured Housing Park<br><b>Commercial</b><br>Retail and Other Commercial<br>Office | <b>Mixed Use</b><br>Mixed-Use Residential<br>Mixed-Use Industrial<br>Mixed-Use Commercial<br><b>Institutional</b><br>Institutional | <b>Industrial</b><br>Industrial and Utility<br>Extractive<br><b>Park and Recreation</b><br>Park, Recreation, or Preserve<br>Golf | <b>Agricultural</b><br>Agricultural Activities<br><b>Other</b><br>Undeveloped<br>Open Water | <b>Transportation</b><br>Major Highway<br>Major Railway<br>Airport or Airstrip |
|--|--|--|--|---|--|

|  |                              |
|--|------------------------------|
|  | County Boundary              |
|  | July 2010                    |
|  | City and Township Boundaries |
|  | July 2010                    |
|  | Roads                        |
|  | NCompass, April 2010         |
|  | Railway                      |
|  | MNDOT, 2001                  |

**Land Use Data Sources:** 2010 State of Minnesota Aerial Imagery • 2005 Generalized Land Use Delineations • NCompass Technologies Road Centerline Data  
2010 Parcel Data from all Seven Metropolitan Counties • Internet Resources • Field Checks • Community Feedback

