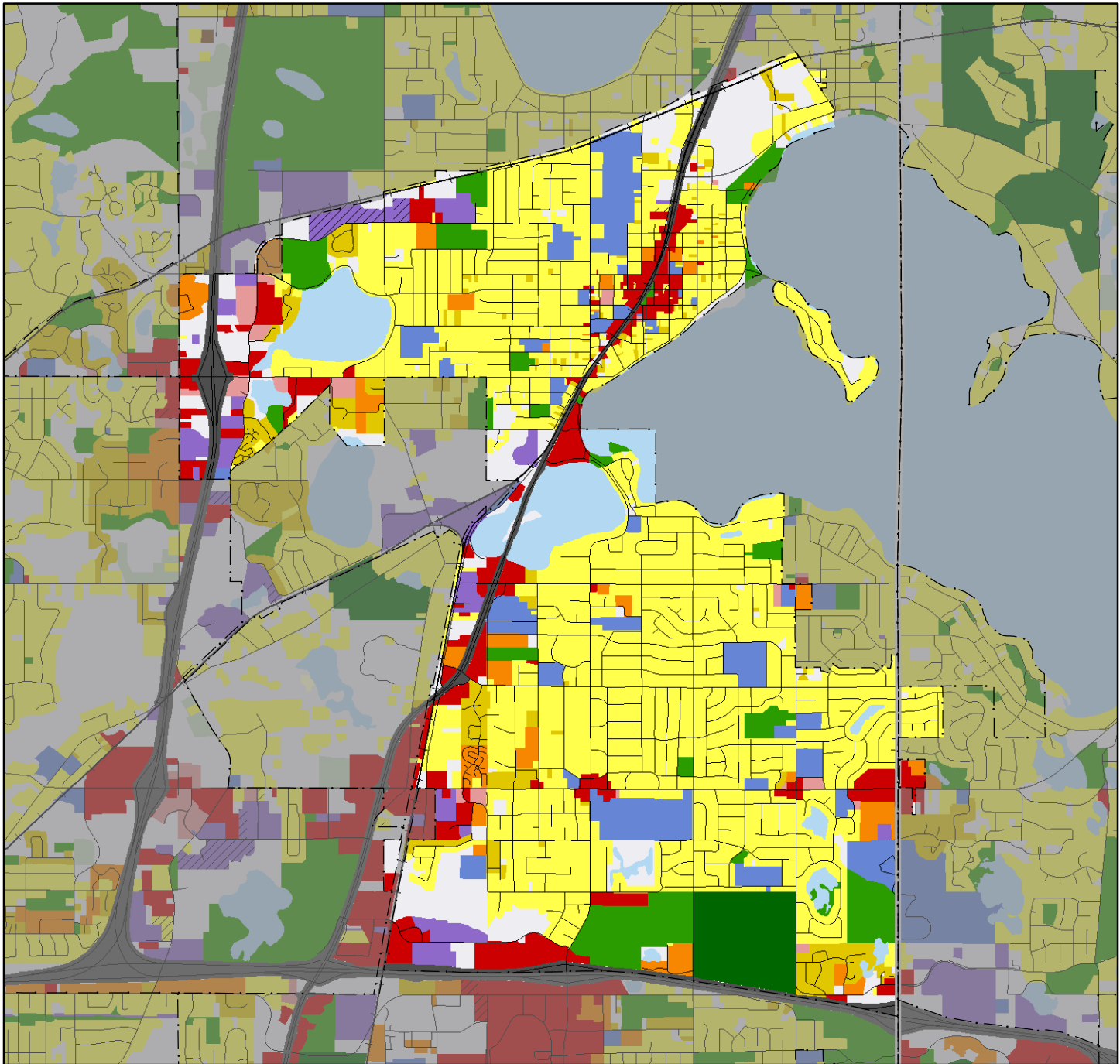


2005 Generalized Land Use

White Bear Lake



Approximately 1 inch equals 0.72 miles when printed on letter size paper

2005 Land Use Classes

Single Family Residential

- Farmstead
- Seasonal / Vacation
- Single Family, Detached
- Single Family, Attached

Multifamily Residential

- Multi-Family
- Manufactured Housing Park

Commercial

- Retail and Other Commercial
- Office

Mixed Use

- Mixed-Use Residential
- Mixed-Use Industrial
- Mixed-Use Commercial

Institutional

- Institutional

Industrial

- Industrial and Utility
- Extractive

Park and Recreation

- Park, Recreation, or Preserve
- Golf

Agricultural

- Agricultural Activities

Other

- Undeveloped
- Open Water

Transportation

- Major Highway
- Major Railway
- Airport or Airstrip

Land Use Data Sources: 2005 MARKHURD Aerial Imagery • 2000 Generalized Land Use Delineations • The Lawrence Group's Road Centerline Data
2005 Parcel Data from all Seven Metropolitan Counties • Internet Resources • Reverse Directories • Field Checks • Community Feedback

County Boundary
--- April 2006

City and Township Boundaries
--- April 2006

Roads
--- TLG, June 2006

Railway
--- MNDOT, 2001