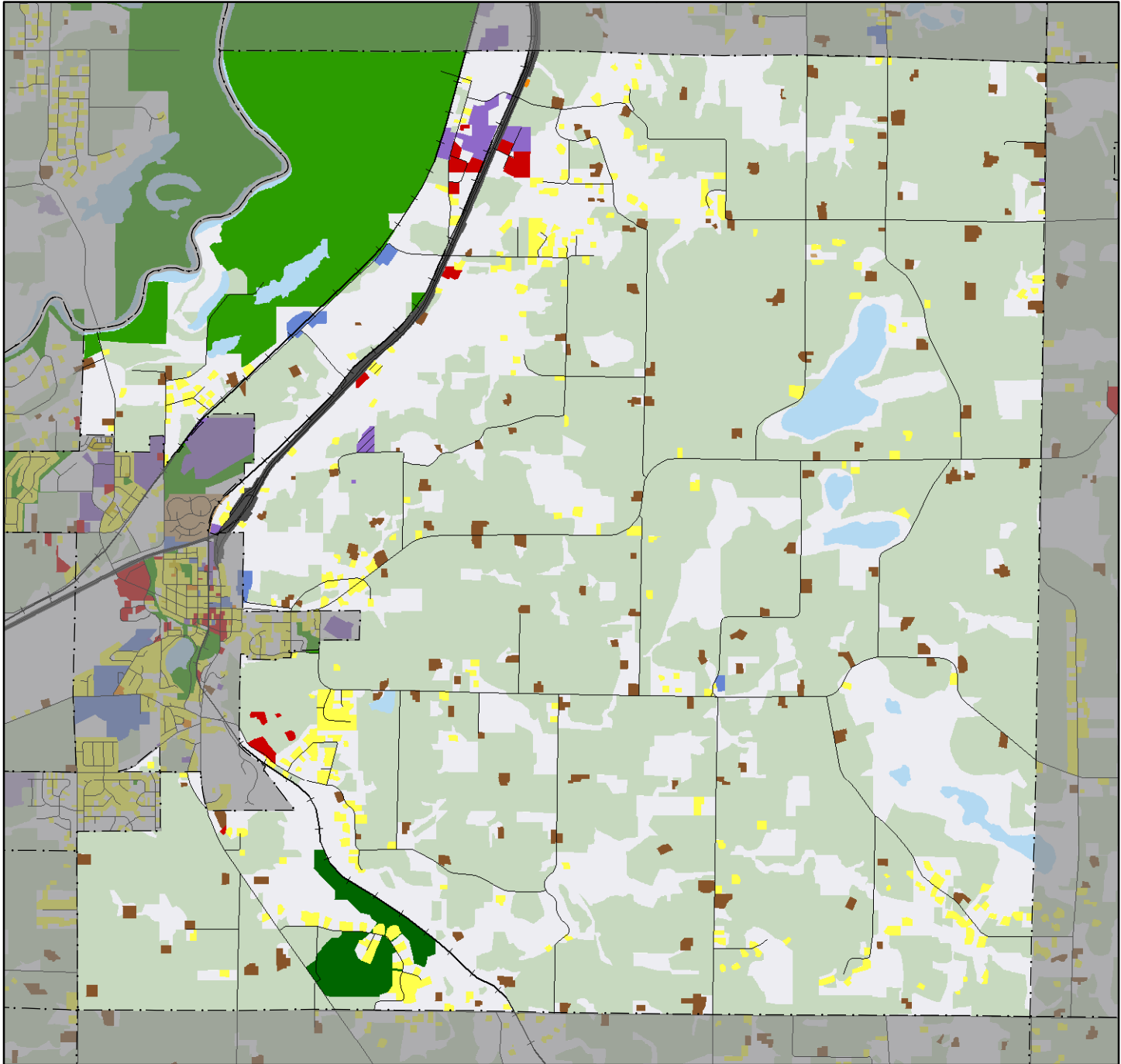


# 2005 Generalized Land Use Sand Creek Twp.



Approximately 1 inch equals 0.94 miles when printed on letter size paper

## 2005 Land Use Classes

<b>Single Family Residential</b> Farmstead Seasonal / Vacation Single Family, Detached Single Family, Attached	<b>Multifamily Residential</b> Multi-Family Manufactured Housing Park <b>Commercial</b> Retail and Other Commercial Office	<b>Mixed Use</b> Mixed-Use Residential Mixed-Use Industrial Mixed-Use Commercial <b>Institutional</b> Institutional	<b>Industrial</b> Industrial and Utility Extractive <b>Park and Recreation</b> Park, Recreation, or Preserve Golf	<b>Agricultural</b> Agricultural Activities <b>Other</b> Undeveloped Open Water	<b>Transportation</b> Major Highway Major Railway Airport or Airstrip
--	---	--	--	---	--

**Land Use Data Sources:** 2005 MARKHURD Aerial Imagery • 2000 Generalized Land Use Delineations • The Lawrence Group's Road Centerline Data  
2005 Parcel Data from all Seven Metropolitan Counties • Internet Resources • Reverse Directories • Field Checks • Community Feedback

County Boundary  
 City and Township Boundaries  
 Roads  
 Railway

--- April 2006

--- April 2006

--- TLG, June 2006

--- MNDOT, 2001