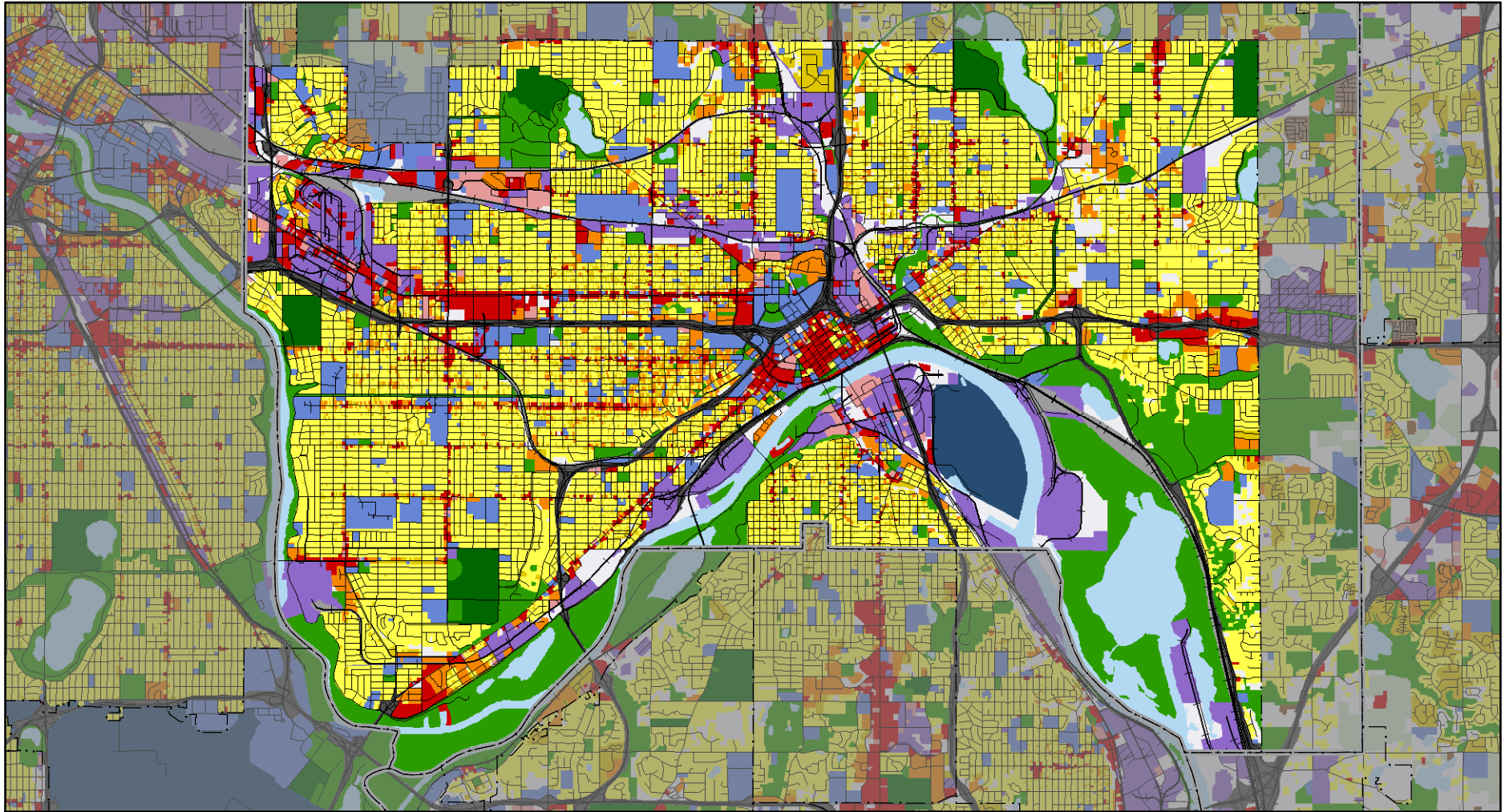


2005 Generalized Land Use St. Paul



Approximately 1 inch equals 1.51 miles when printed on letter size paper

2005 Land Use Classes

Single Family Residential Farmstead Seasonal / Vacation Single Family, Detached Single Family, Attached	Multifamily Residential Multi-Family Manufactured Housing Park Commercial Retail and Other Commercial Office	Mixed Use Mixed-Use Residential Mixed-Use Industrial Mixed-Use Commercial Institutional Institutional	Industrial Industrial and Utility Extractive Park and Recreation Park, Recreation, or Preserve Golf	Agricultural Agricultural Activities Other Undeveloped Open Water	Transportation Major Highway Major Railway Airport or Airstrip
--	---	--	--	---	--

	County Boundary
	April 2006
	City and Township Boundaries
	April 2006
	Roads
	TLG, June 2006
	Railway
	MNDOT, 2001

Land Use Data Sources:

- 2005 MARKHURD Aerial Imagery
- 2000 Generalized Land Use Delineations
- The Lawrence Group's Road Centerline Data
- 2005 Parcel Data from all Seven Metropolitan Counties
- Internet Resources
- Reverse Directories
- Field Checks
- Community Feedback



Map Printed June 2006