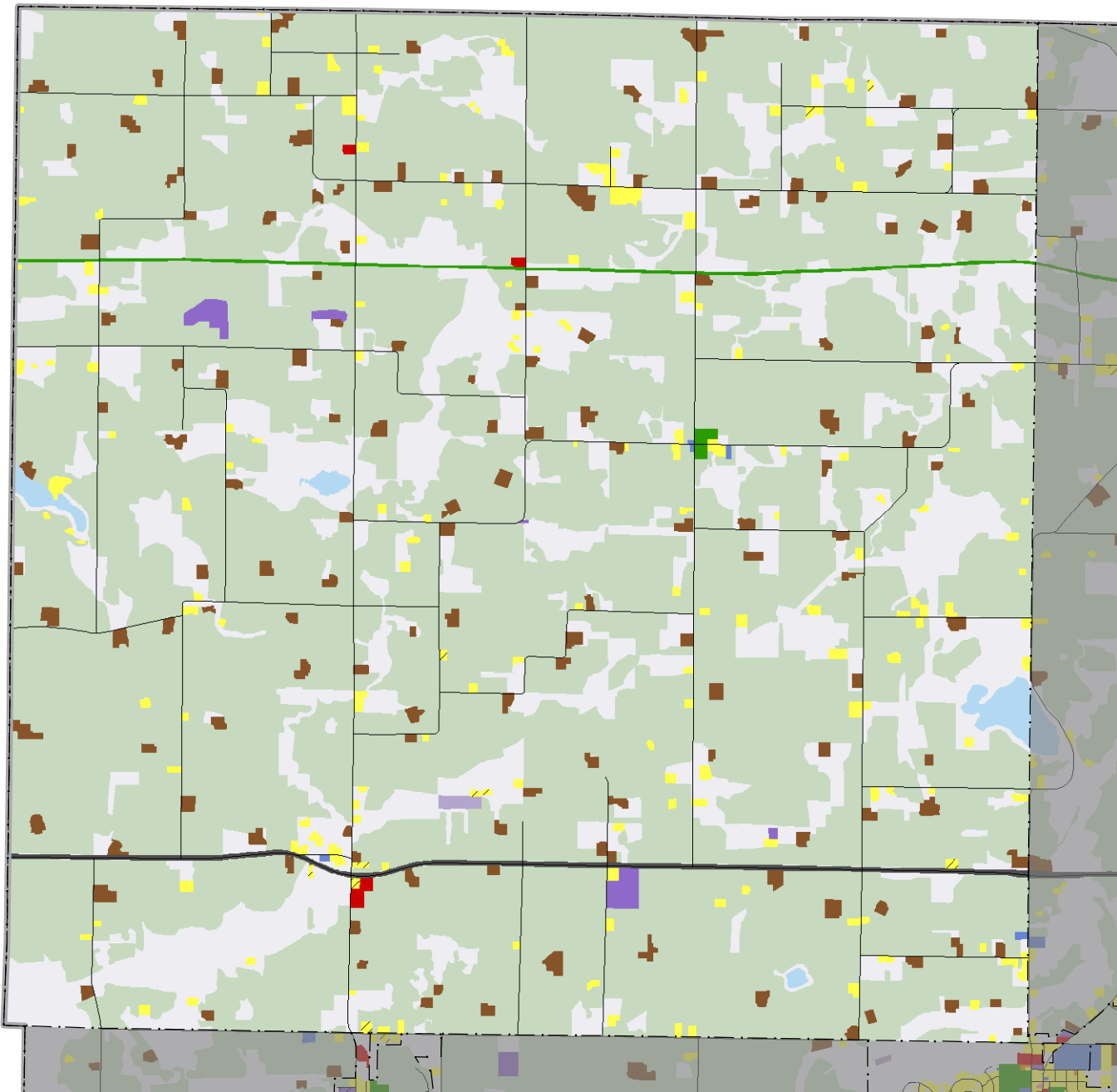


2005 Generalized Land Use Hollywood Twp.



Approximately 1 inch equals 0.94 miles when printed on letter size paper

2005 Land Use Classes

| | | | | | |
|--|---|--|--|---|--|
| Single Family Residential Farmstead Seasonal / Vacation Single Family, Detached Single Family, Attached | Multifamily Residential Multi-Family Manufactured Housing Park Commercial Retail and Other Commercial Office | Mixed Use Mixed-Use Residential Mixed-Use Industrial Mixed-Use Commercial Institutional Institutional | Industrial Industrial and Utility Extractive Park and Recreation Park, Recreation, or Preserve Golf | Agricultural Agricultural Activities Other Undeveloped Open Water | Transportation Major Highway Major Railway Airport or Airstrip |
|--|---|--|--|---|--|

Land Use Data Sources: 2005 MARKHURD Aerial Imagery • 2000 Generalized Land Use Delineations • The Lawrence Group's Road Centerline Data
2005 Parcel Data from all Seven Metropolitan Counties • Internet Resources • Reverse Directories • Field Checks • Community Feedback

County Boundary
--- April 2006

City and Township Boundaries
--- April 2006

Roads
--- TLG, June 2006

Railway
--- MNDOT, 2001