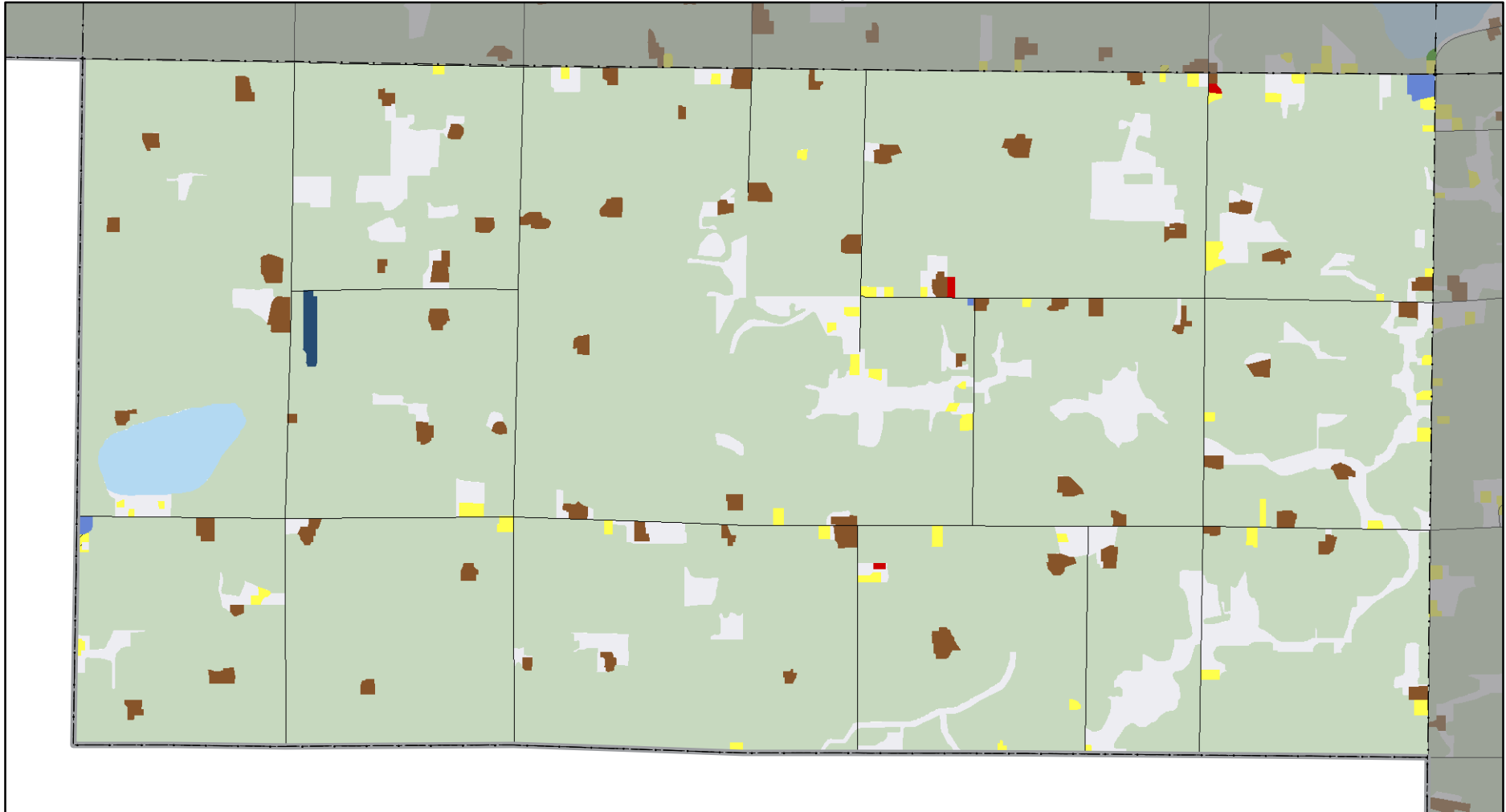


2005 Generalized Land Use Hancock Twp.



Approximately 1 inch equals 0.68 miles when printed on letter size paper

2005 Land Use Classes

Single Family Residential Farmstead Seasonal / Vacation Single Family, Detached Single Family, Attached	Multifamily Residential Multi-Family Manufactured Housing Park Commercial Retail and Other Commercial Office	Mixed Use Mixed-Use Residential Mixed-Use Industrial Mixed-Use Commercial Institutional Institutional	Industrial Industrial and Utility Extractive Park and Recreation Park, Recreation, or Preserve Golf	Agricultural Agricultural Activities Other Undeveloped Open Water	Transportation Major Highway Major Railway Airport or Airstrip
--	---	--	--	---	--

County Boundary	---	April 2006
City and Township Boundaries	---	April 2006
Roads	---	TLG, June 2006
Railway	---	MNDOT, 2001

Land Use Data Sources:

- 2005 MARKHURD Aerial Imagery
- 2000 Generalized Land Use Delineations
- The Lawrence Group's Road Centerline Data
- 2005 Parcel Data from all Seven Metropolitan Counties
- Internet Resources
- Reverse Directories
- Field Checks
- Community Feedback

