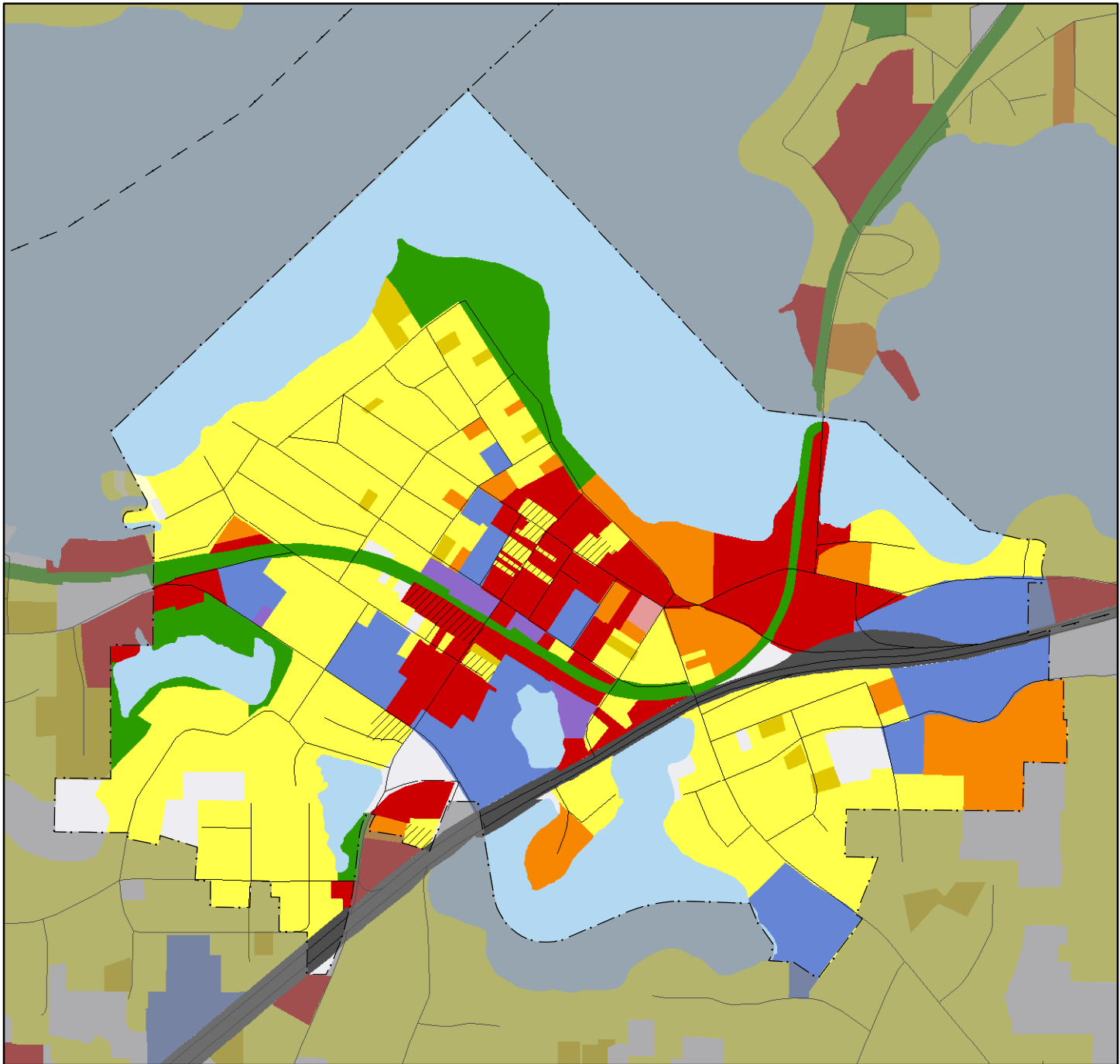


# 2005 Generalized Land Use Excelsior



Approximately 1 inch equals 0.19 miles when printed on letter size paper

## 2005 Land Use Classes

### Single Family Residential

- Farmstead
- Seasonal / Vacation
- Single Family, Detached
- Single Family, Attached

### Multifamily Residential

- Multi-Family
- Manufactured Housing Park

### Commercial

- Retail and Other Commercial
- Office

### Mixed Use

- Mixed-Use Residential
- Mixed-Use Industrial
- Mixed-Use Commercial

### Institutional

- Institutional

### Industrial

- Industrial and Utility
- Extractive

### Park and Recreation

- Park, Recreation, or Preserve
- Golf

### Agricultural

- Agricultural Activities

### Other

- Undeveloped
- Open Water

### Transportation

- Major Highway
- Major Railway
- Airport or Airstrip

**Land Use Data Sources:** 2005 MARKHURD Aerial Imagery • 2000 Generalized Land Use Delineations • The Lawrence Group's Road Centerline Data  
2005 Parcel Data from all Seven Metropolitan Counties • Internet Resources • Reverse Directories • Field Checks • Community Feedback

County Boundary  
--- April 2006

City and Township Boundaries  
--- April 2006

Roads  
--- TLG, June 2006

Railway  
--- MNDOT, 2001