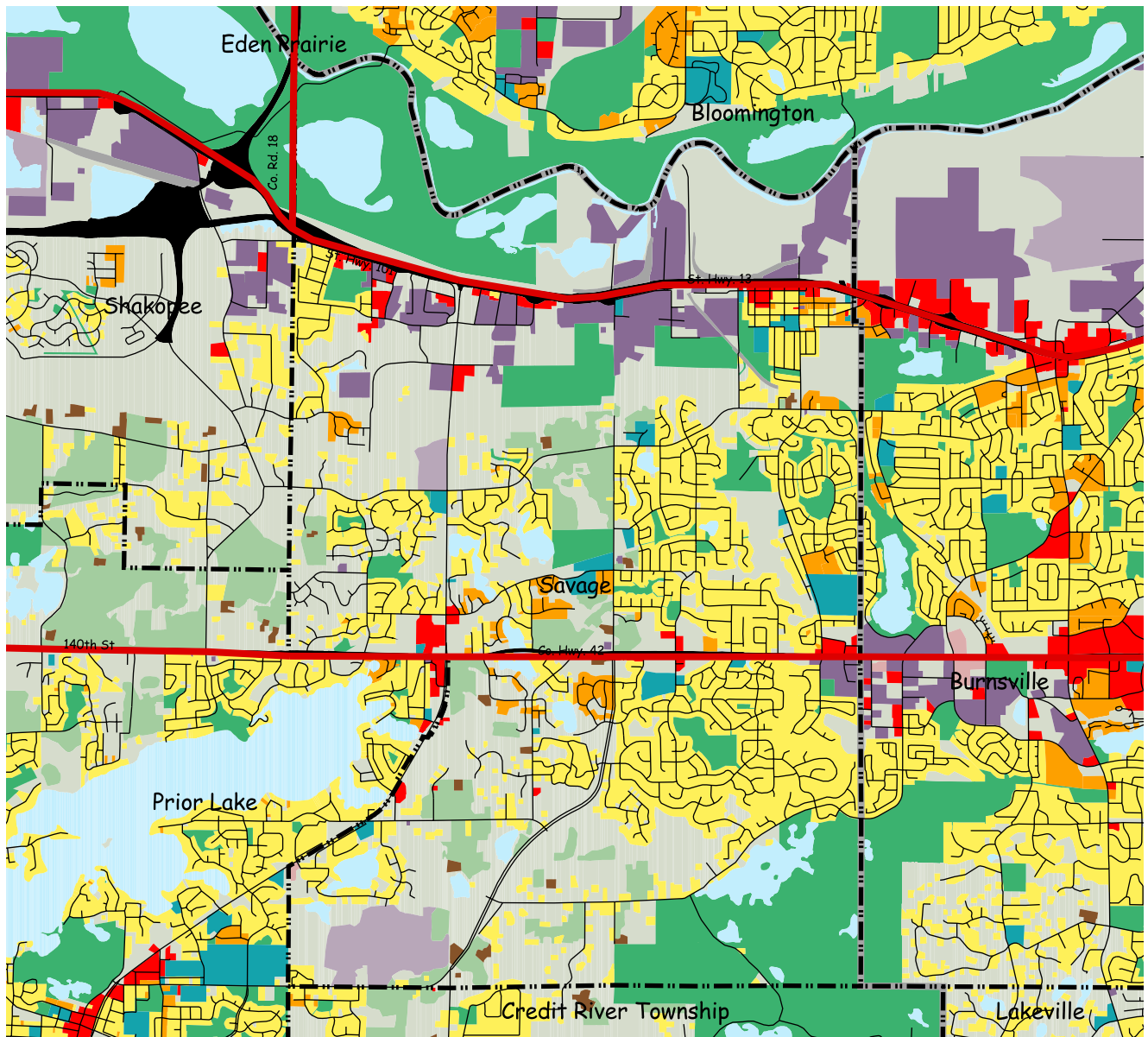


2000 Generalized Land Use Savage



- Single Family Residential
- Multi-Family Residential
- Commercial
- Industrial
- Institutional
- Mixed Use

- Extractive
- Parks, Recreation & Preserves
- Undeveloped
- Open Water
- Agriculture
- Farmsteads

- Airports
- Major Vehicular Rights-of-Way
- Railways
- Community Boundaries
- County Boundaries
- Local Roads
- Highways

0.8 0 0.8 1.6 2.4 Miles