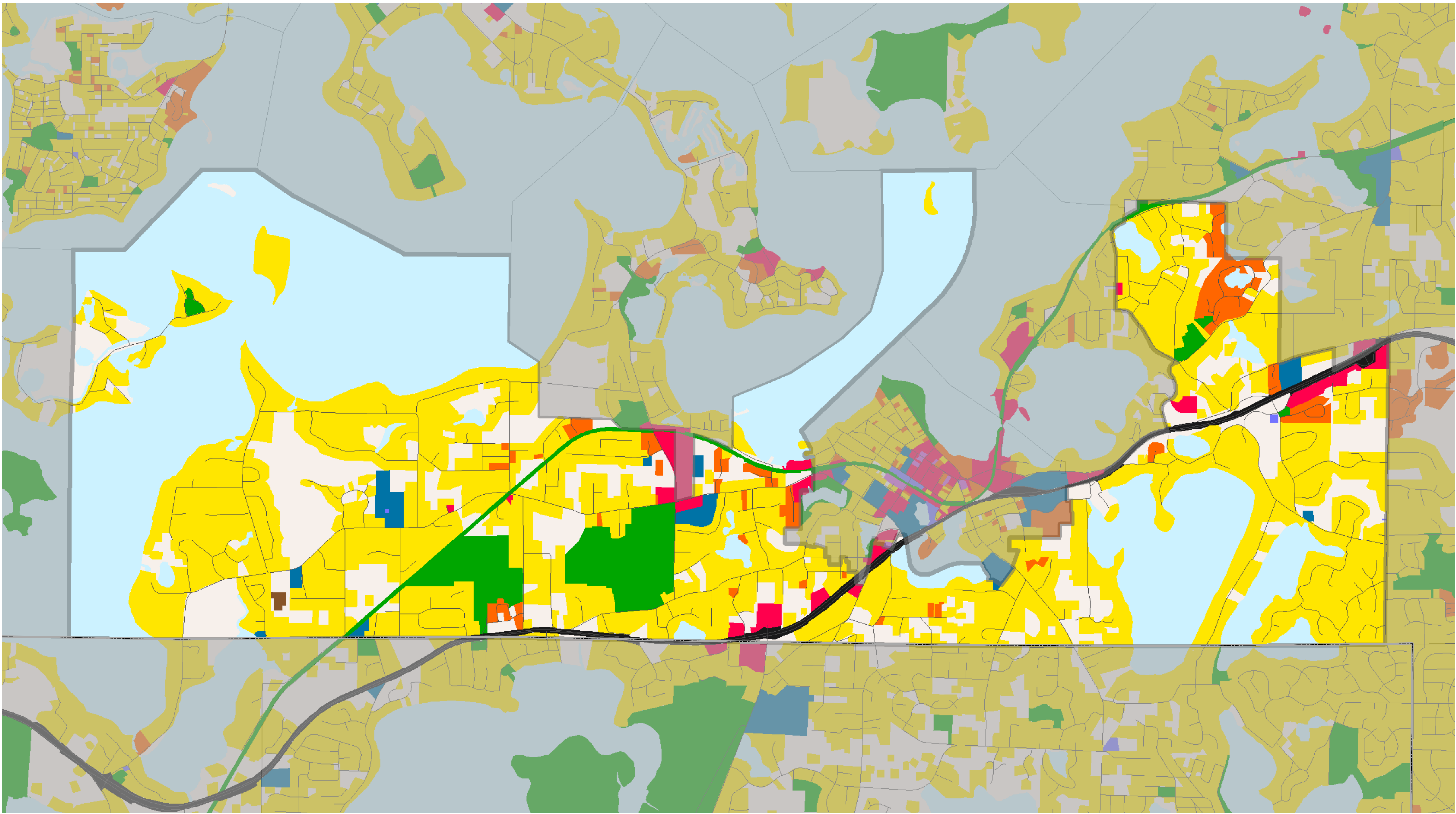


# 2000 Generalized Land Use Shorewood



0 0.2 0.4 0.8 1.2 1.6 Miles

- Single-Family Residential
- Multifamily Residential
- Commercial
- Industrial and Utility
- Institutional
- Mixed Use --  
*residential, industrial, commercial*

- Extractive --  
*gravel pit and quarry*
- Farmstead
- Water
- Undeveloped
- Agricultural
- Park, Recreational, or Preservation Area

- Airport
- Major Vehicular Rights of Way
- Multitrack Railway
- County Boundary
- Roadway



**Metropolitan Council**  
*Building communities that work*

Data Sources:

2000 Aerial Imagery, 1997 Land Use Delineations,  
The Lawrence Group's Road Centerline Data,  
2000 Parcel Data from all Seven Metropolitan Counties,  
Reverse Directories, Field Checks, Community Feedback