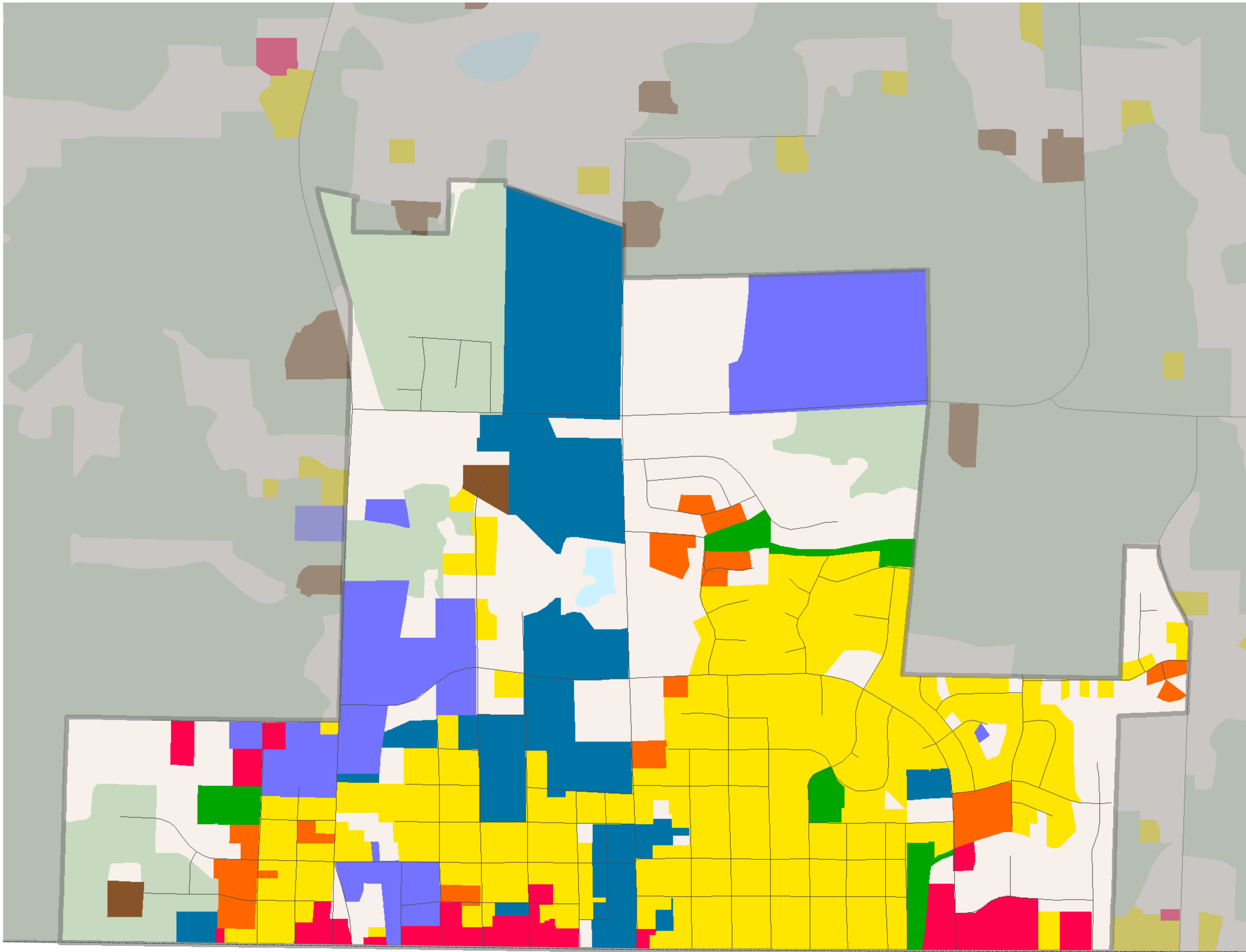


2000 Generalized Land Use

New Prague



0 0.1 0.2 0.4 0.6 0.8 Miles

- Single-Family Residential
- Multifamily Residential
- Commercial
- Industrial and Utility
- Institutional
- Mixed Use --
residential, industrial, commercial

- Extractive --
gravel pit and quarry
- Farmstead
- Water
- Undeveloped
- Agricultural
- Park, Recreational, or Preservation Area

- Airport
- Major Vehicular Rights of Way
- Multitrack Railway
- County Boundary
- Roadway

