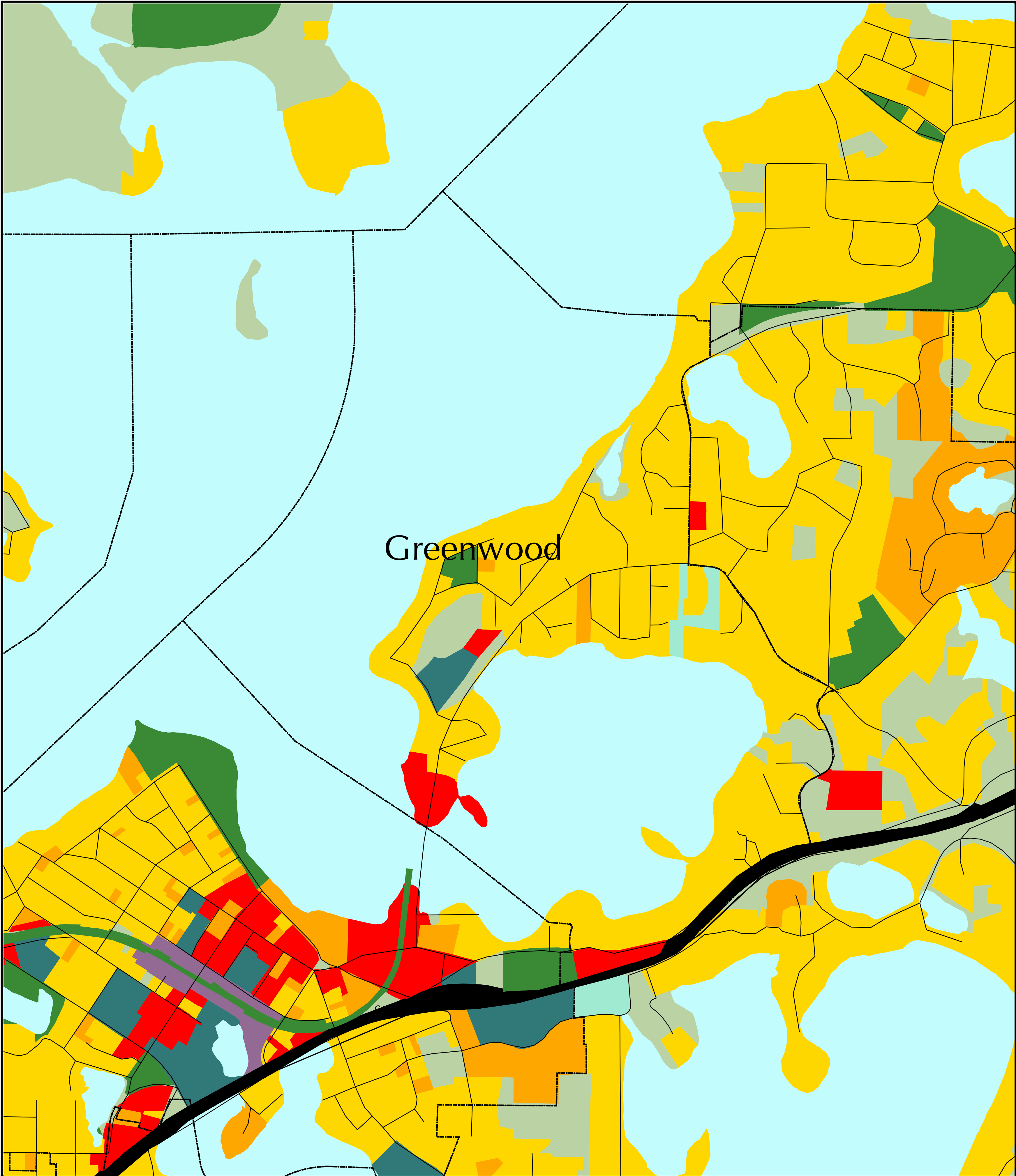


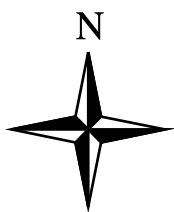
1997 Generalized Land Use Greenwood



- Single-Family Housing
- Multifamily Housing
- Commercial
- Industrial
- Public Industrial
- Extractive - gravel pits and quarries

- Public and Semi-Public
- Major Four Lane Highways
- Airports
- Water
- Parks and Recreation
- Farmsteads

- Agricultural and Vacant Lands
- Industrial Parks not Developed
- Public and Semi-Public not Developed
- Local Roads (Source: The Lawrence Group)
- Municipal Boundary



0 0.1 0.2 0.3 0.4 Miles