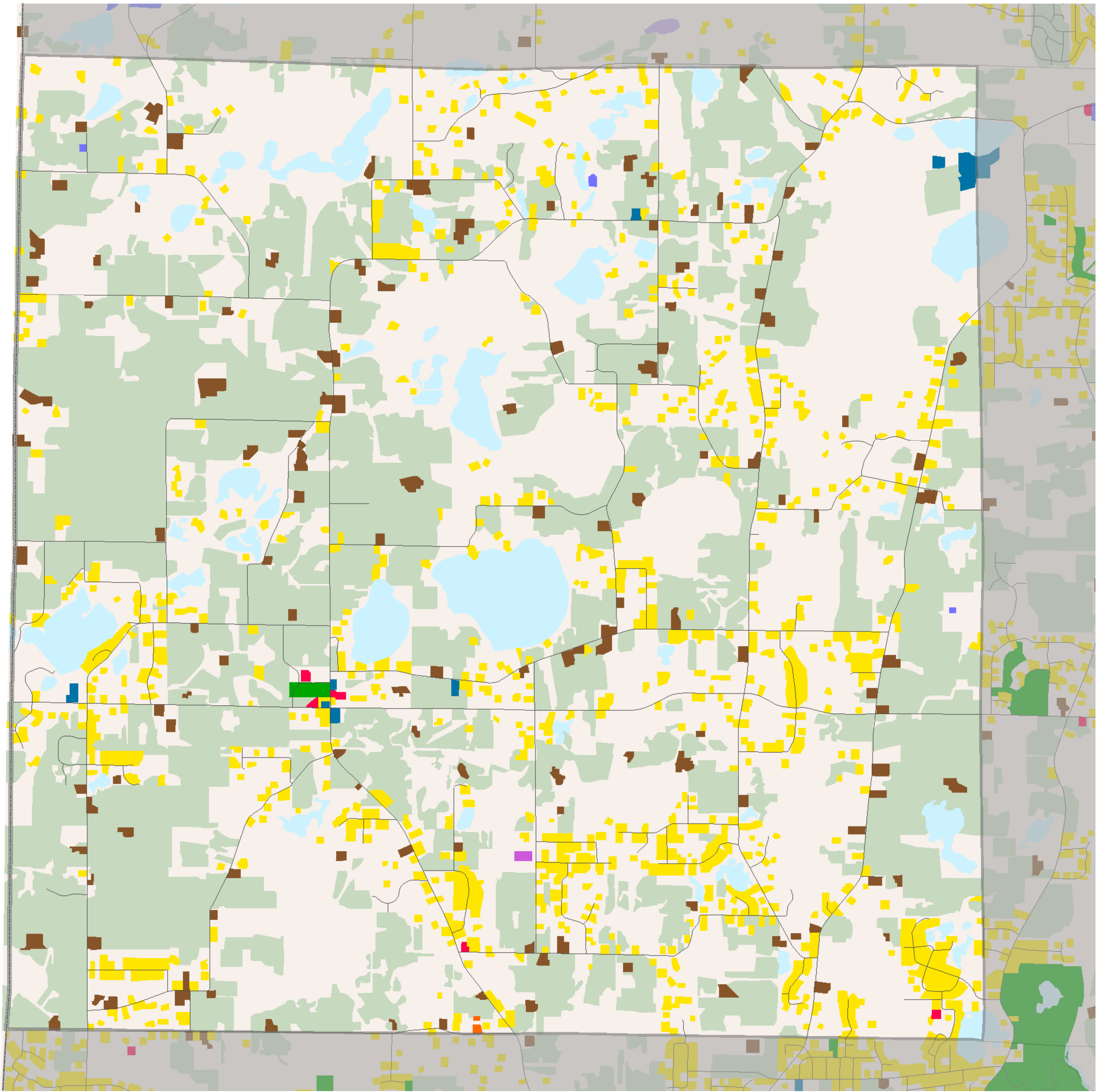


# 2000 Generalized Land Use

## Burns Twp.



0 0.3 0.6 1.2 1.8 2.4 Miles

- Single-Family Residential
- Multifamily Residential
- Commercial
- Industrial and Utility
- Institutional
- Mixed Use --  
*residential, industrial, commercial*

- Extractive --  
*gravel pit and quarry*
- Farmstead
- Water
- Undeveloped
- Agricultural
- Park, Recreational, or Preservation Area

- Airport
- Major Vehicular Rights of Way
- Multitrack Railway
- County Boundary
- Roadway

