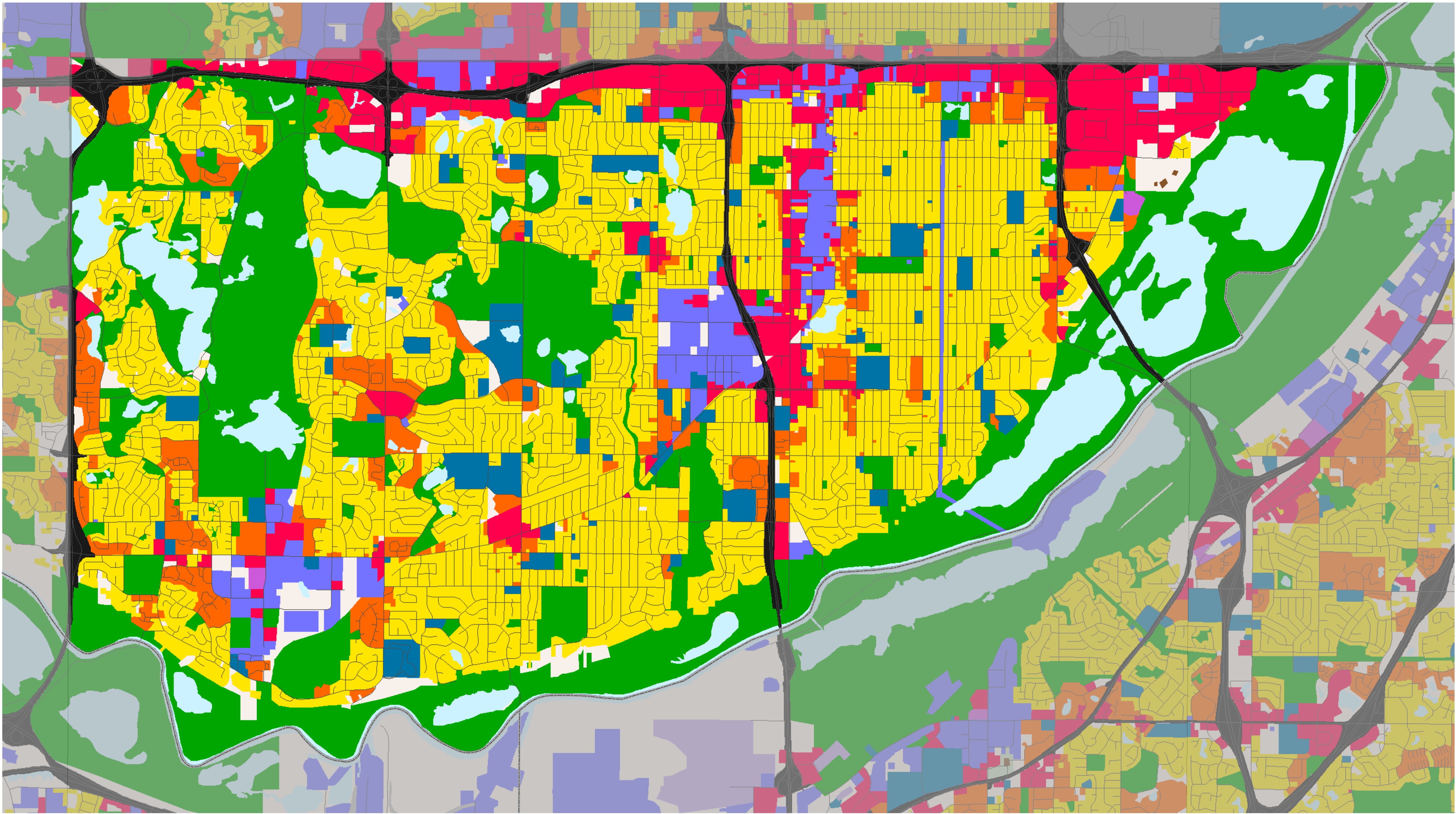


2000 Generalized Land Use Bloomington



0 0.375 0.75 1.5 2.25 3 Miles

- Single-Family Residential
- Multifamily Residential
- Commercial
- Industrial and Utility
- Institutional
- Mixed Use --
residential, industrial, commercial

- Extractive --
gravel pit and quarry
- Farmstead
- Water
- Undeveloped
- Agricultural
- Park, Recreational, or Preservation Area

- Airport
- Major Vehicular Rights of Way
- Multitrack Railway
- County Boundary
- Roadway



Metropolitan Council
Building communities that work

Data Sources:

2000 Aerial Imagery, 1997 Land Use Delineations,
The Lawrence Group's Road Centerline Data,
2000 Parcel Data from all Seven Metropolitan Counties,
Reverse Directories, Field Checks, Community Feedback