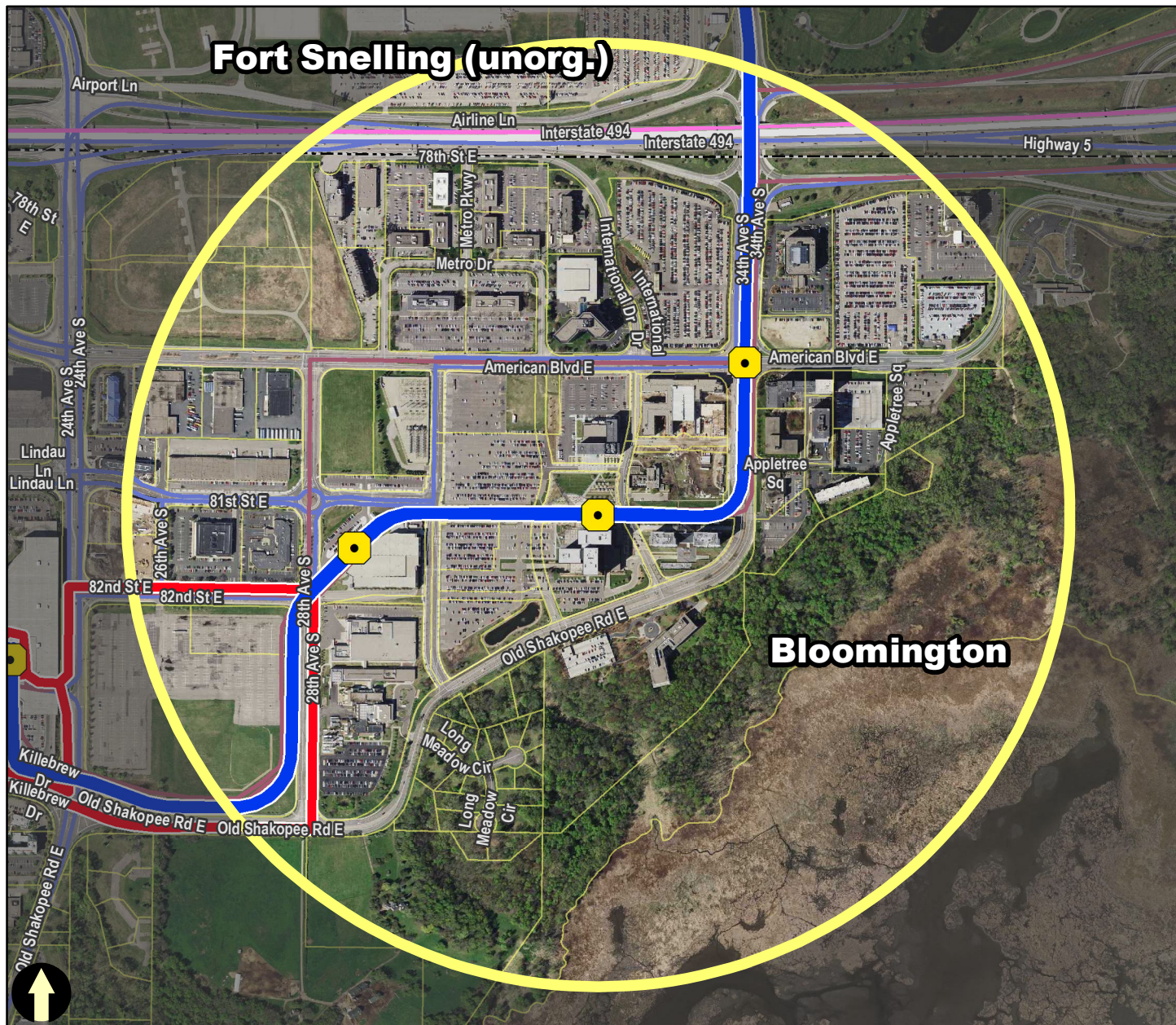


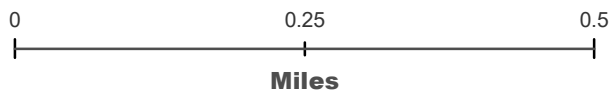
Fort Snelling (unorg-)

Bloomington Central Station Blue Line



- LCA TOD Eligible Area
- Transit Station
- Planned Transit Station
- Blue Line
- Blue Line Extension
- Northstar Commuter Rail
- Green Line
- Green Line Extension
- Red Line
- Red Line - Phase II
- Orange Line
- Gold Line
- Arterial BRT
- High Frequency Express Bus Route
- Transit Bus Route
- Parcel Boundary

2/28/2018



10 Transit Routes within a half mile of station:

54	470	539
415	495	542
440	538	903
444		

The Fort Snelling unincorporated area is not a participating community under the Livable Communities Act, and projects in that area are not eligible to apply for Livable Communities Act grants.

