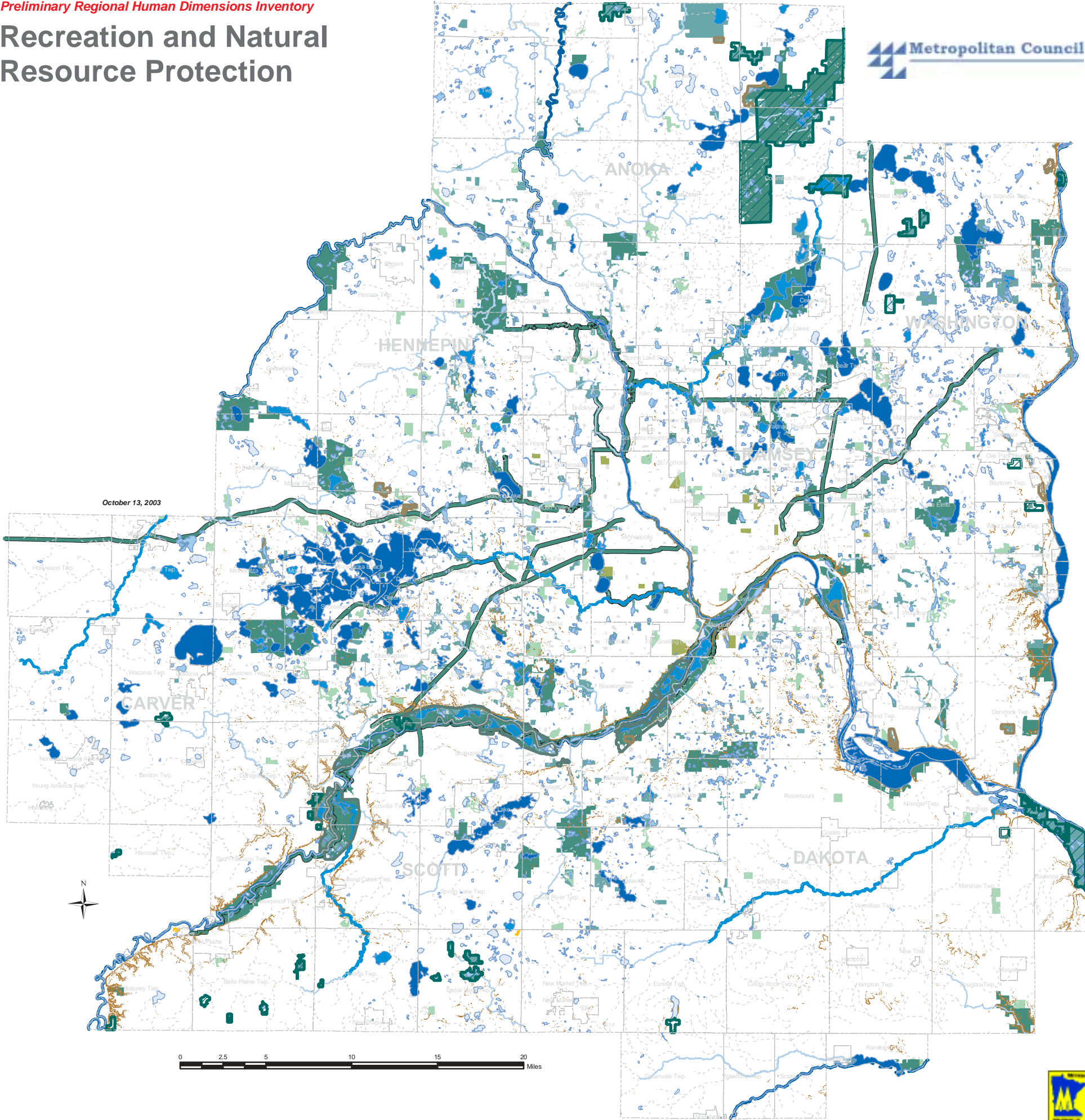


Recreation and Natural Resource Protection



Recreation and Open Space

Only areas of 40 or more contiguous acres are shown

- Regional Recreation Open Space**
Includes regional parks and park reserves, as well as state and federal lands recognized as part of the regional system
- County, Local and Private Parks**
Land identified as recreational in the 2000 land use inventory
- Golf Courses**
Land identified as golf courses in the 2000 land use inventory
- Cemeteries**
Land identified as cemeteries by The Lawrence Group and by communities as part of the planned land use inventory
- Existing and Funded Regional and State Trails**
Source: The Lawrence Group, 2000; trails not shown within park boundaries
- All Categories Above of less than 40 Contiguous Acres**
Sources: Metropolitan Council 2000 land use and planned land use inventories

Additional Natural Resources

Boundary source: MnDNR; only areas of 40 or more contiguous acres are shown

- Wildlife Management Areas**
- Minnesota Valley National Wildlife Refuge**
- Scientific Natural Areas**
- Land in RIM**

Aquatic Resources

Data source: Metropolitan Council

Surface Water Features Showing Maximum Rank for Recreation and Supply Uses

- Outstanding**
- High**
- Moderate**
- Limited**

Recreational use capacity is determined by public accessibility to the shoreline and water surface and basic physical characteristics and aesthetics which support direct or indirect recreational uses. Water supply use is based upon frequency of use as a source of public drinking water.

- Steep Slopes (18% or greater)**