

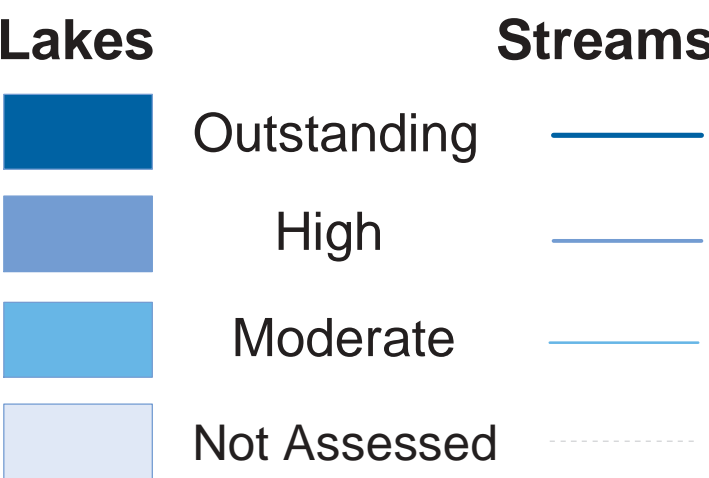
Terrestrial and Aquatic Ecological Assessment



Aquatic Ecological Resources

Source: Metropolitan Council

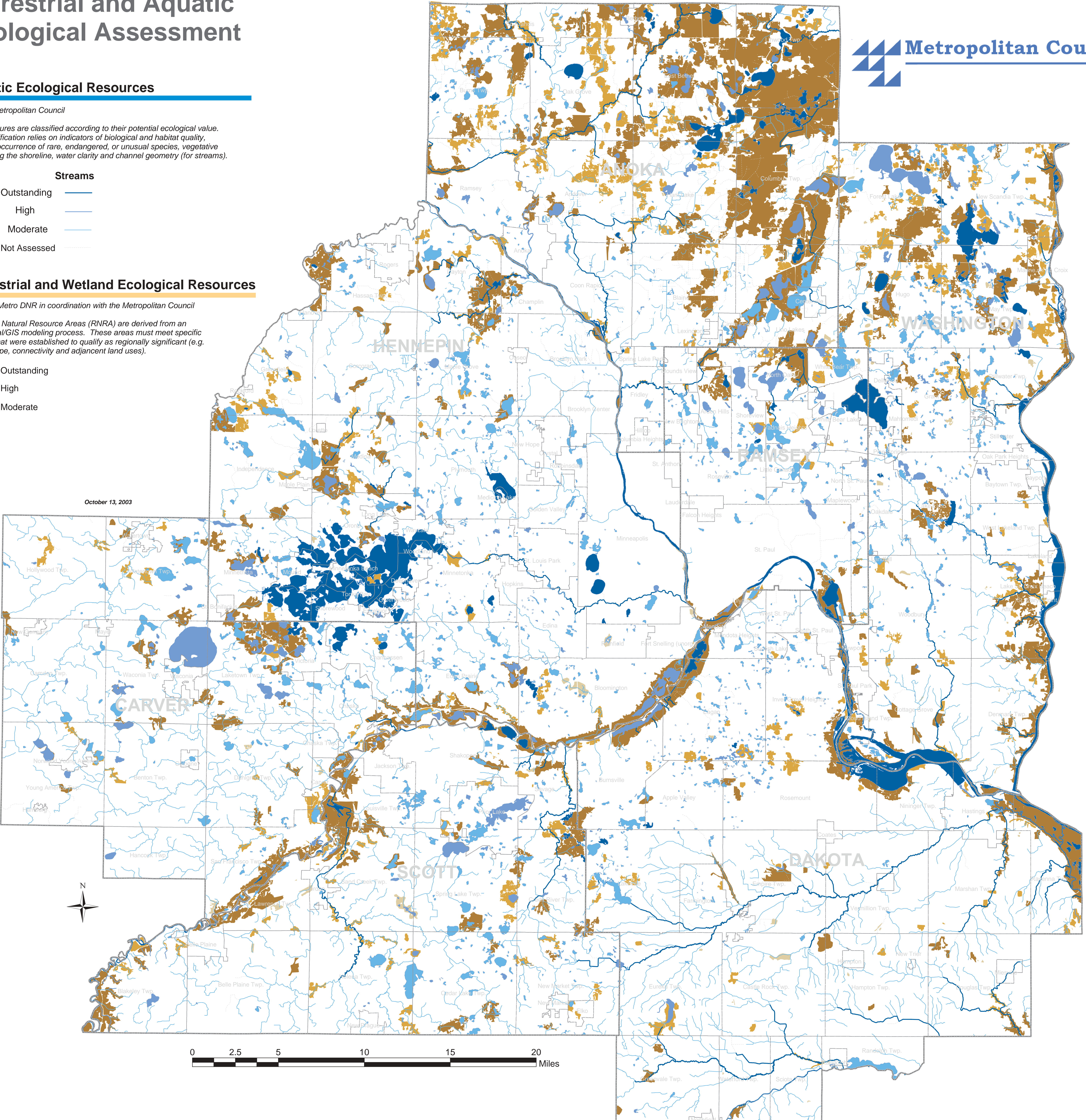
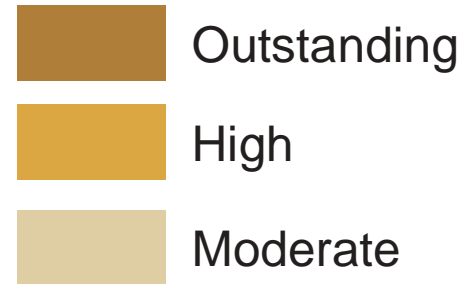
Water features are classified according to their potential ecological value. This classification relies on indicators of biological and habitat quality, including occurrence of rare, endangered, or unusual species, vegetative cover along the shoreline, water clarity and channel geometry (for streams).



Terrestrial and Wetland Ecological Resources

Source: Metro DNR in coordination with the Metropolitan Council

Regional Natural Resource Areas (RNRA) are derived from an ecological/GIS modeling process. These areas must meet specific criteria that were established to qualify as regionally significant (e.g. size, shape, connectivity and adjacent land uses).



October 13, 2003

