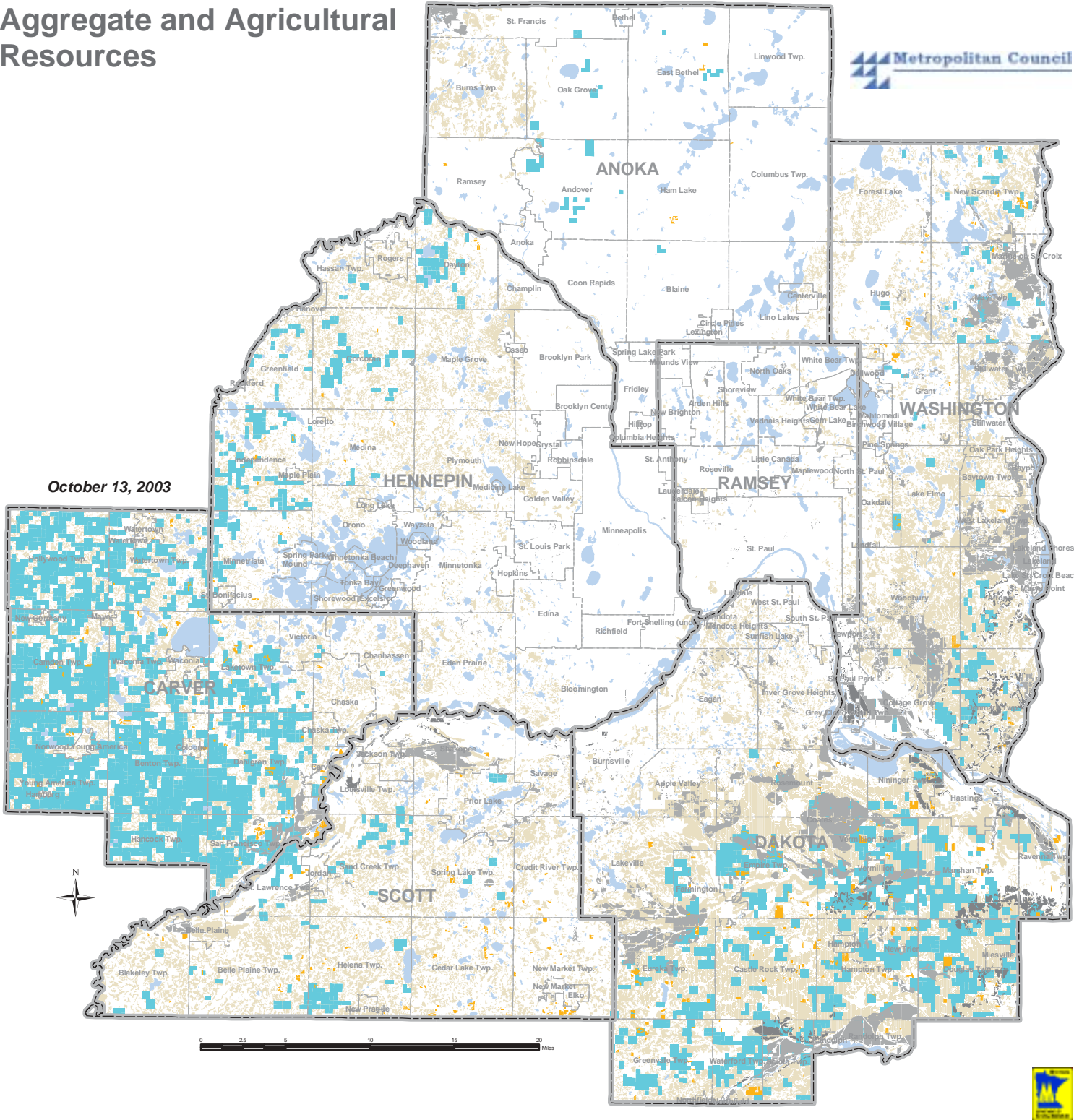




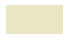
Aggregate and Agricultural Resources



October 13, 2003






Agricultural Resources

-  CRP Land
-  Land Enrolled in Agricultural Preserves as of 1998
-  Prime Farm Land Soils
Includes areas considered prime farm land with no improvements needed

Aggregate Resources

Estimated Extent of Unencumbered Aggregate Resources as of 1997

-  Sand and Gravel Deposits
-  Dolostone Deposits
-  Open Water