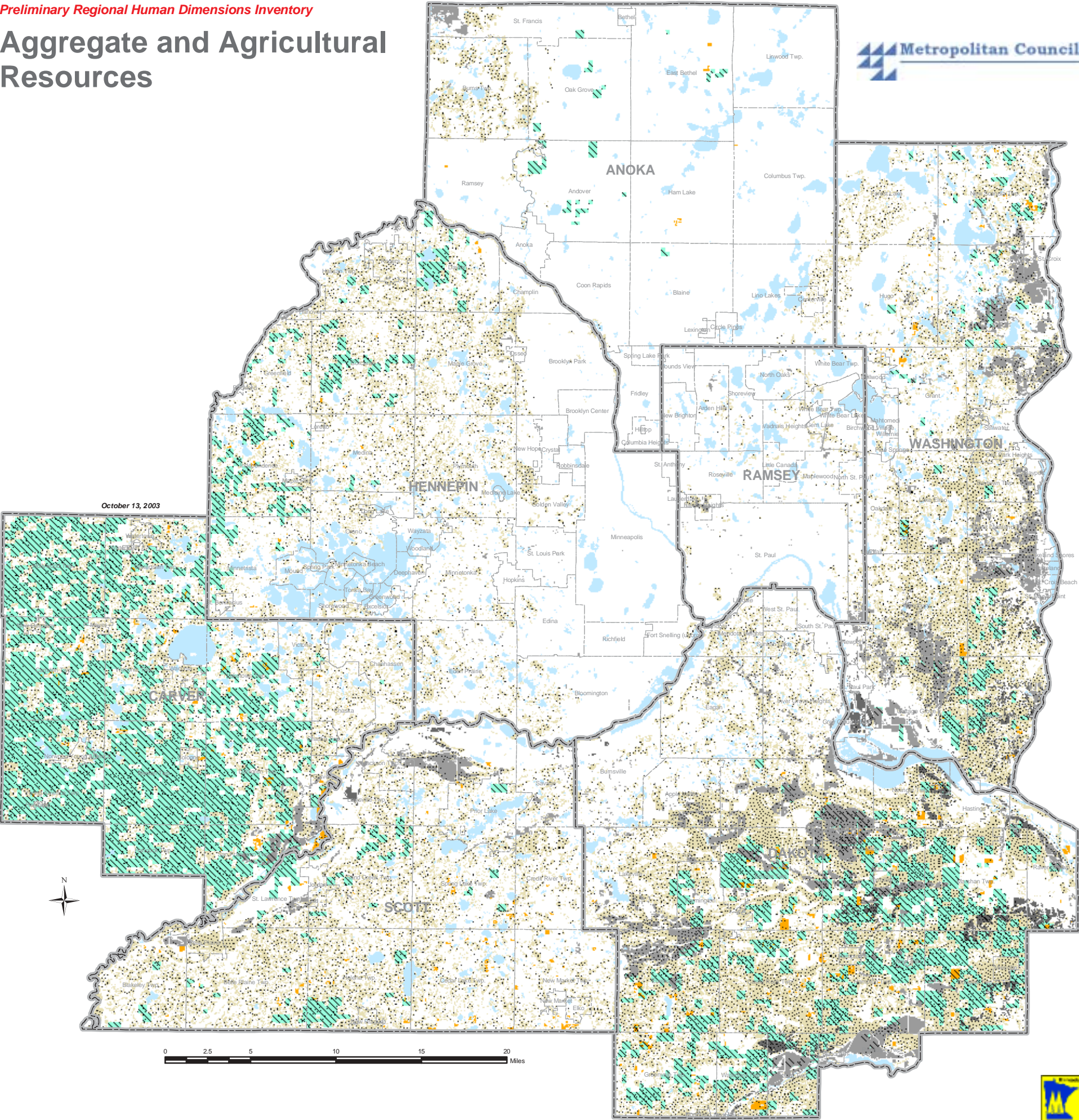





Aggregate and Agricultural Resources



October 13, 2003






Agricultural Resources

-  **CRP Land**
-  **Land Enrolled in Agricultural Preserves as of 1998**
-  **Prime Farm Land Soils**
Includes areas considered prime farm land with no improvements needed

Aggregate Resources

Estimated Extent of Unencumbered Aggregate Resources as of 1997

-  **Sand and Gravel Deposits**
-  **Dolostone Deposits**
-  **Open Water**